

## '07 Paint--Denim and Metal Leaf Graphics are Back!

By now you've noticed that the '07 model year includes two new Denim paints. In addition to the Black Denim carried over from last year, Harley-Davidson has developed a Blue Denim and a Pewter Denim. Like Denim fabric, Denim paint will burnish or mar with age and use, thus adding character and personality to the finish of the motorcycle.

There are two recommended ways of cleaning Denim paints. The most common way is to use soapy water followed by a clean water rinse. You may also use an ammonia based glass cleaner. (NOTE—ammonia based glass cleaners WILL DAMAGE LEXAN, so please make sure your staff/customers do not get any on their windshields!) Careful consideration should be given to the handling of Denim paint, as damage from scratching or scuffing cannot be recovered by buffing, like paints with a glossy finish.

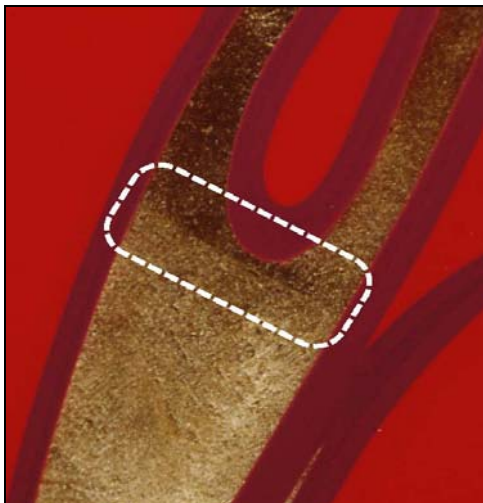
Metal leaf graphics are back on the Screaming Eagle Road King (FLHRSE3). There are three different metal leaf inlays: Burnt Gold, Pale Gold, and Pewter. The handcrafted process of metallic leafing yields a highly reflective surface that catches the eye as no other material does. Due to leafing being a natural material, however, the individual metallic sheets impart to the gilded surface unique characteristics.

A thin line will be visible where each sheet or leaf overlaps; Degree of visibility of this line will vary depending upon the luster of the adjoining leaves.

Small "wrinkles", variations in luster, or differences in reflectivity is acceptable

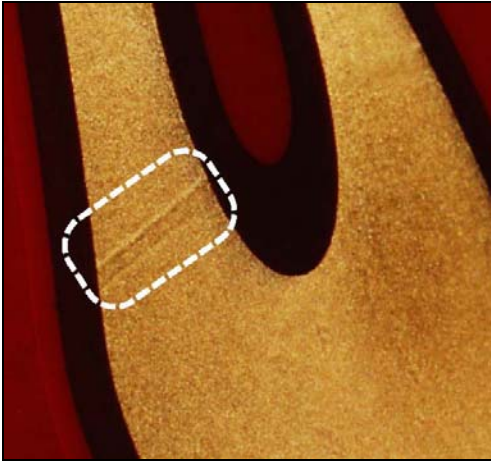
Acceptable Natural Characteristics (examples):

### 1.) Leaf Seam & Leaf Color Variance



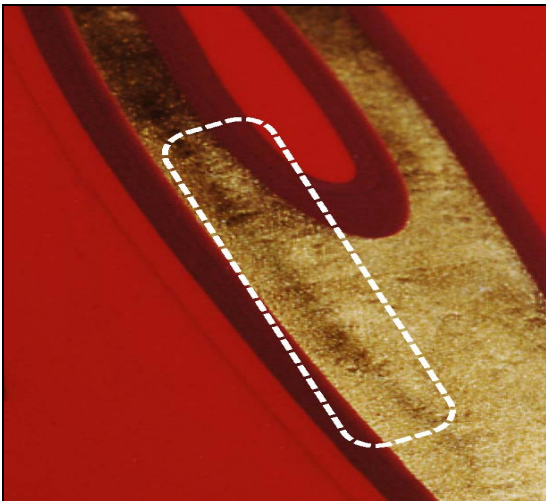
A leaf seam is found where two sheets of metallic leafing are joined. In addition, color variance from one leaf to the adjoining leaf may be noticeable. This color variance is due to the difference in Reflectivity from one sheet to the next and is strictly controlled by nature. This color variance causes the seam to be more visible. A seam can be found approximately every 2 inches along each graphic.

2.) Leaf Patch



A leaf patch can be found where two leaves overlap. This is noticeable by the double seam line. Once again, differences in reflectivity can make this stand out more or less.

3.) Leaf Texture



Differences in texture occur due to swirling marks that may appear on the same sheet as well as across sheets.

4.) Leaf Low Spot (Burnish Void)



A burnish void occurs when a sheet is burnished and a spot is slightly lower than the rest of the surface. This low spot does not become burnished and remains brighter or shinier than the surrounding area.

5.) Gathering (wrinkles)



Gathering or wrinkling may occur due to the nature of the leafing application process.

Finally, you should be aware of a difference in 'feel' that may be noticed by your customers in the '07 Suede Blue paint. This particular color has some of the largest metal flake that Harley-Davidson has ever used, and the texture may not seem as smooth as other paints. This condition is more noticeable on the plastic parts (saddlebags, tour packs, and side covers), but may also be noticeable on some metal parts as well. Please assure your customers that have questions about the 'feel' of their Suede Blue paint that a rougher feel is normal for that color.

As always, continue to use your Cosmetic Guidelines Manual as a reference guide when reviewing warranty concerns on painted parts.