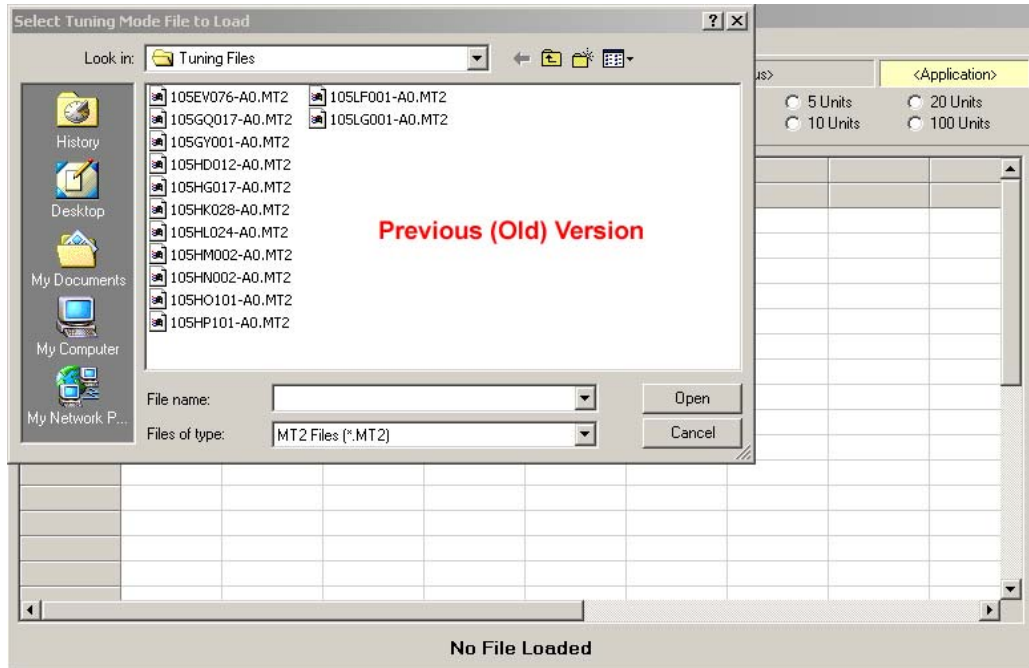


October 11, 2004

## EFI Race Tuner Calibrations

The following instructions are for converting EFI Race Tuner Version 3.5.0 files into Version 4.1.0 software.

1. Choose the file in Version 3.5.0 that you would like to convert. You will notice that all the old version files end in .MT2.

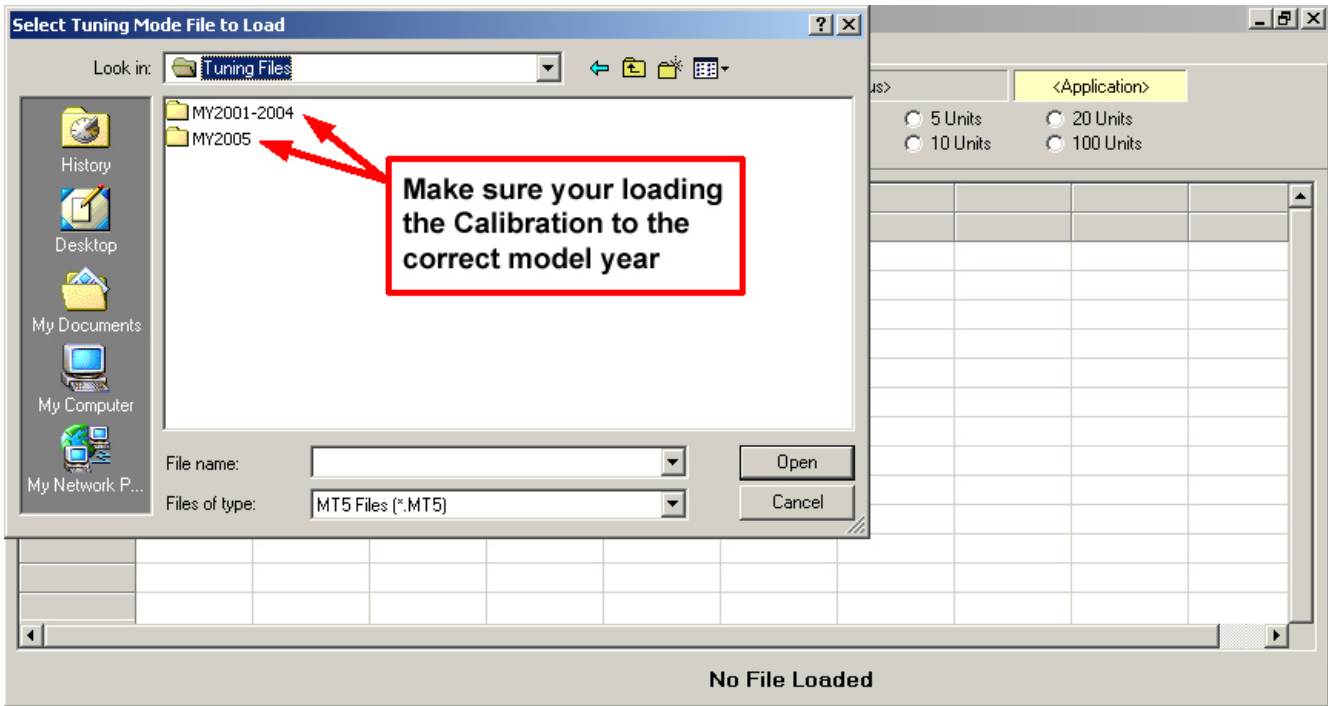


2. Open the file and left click on the top left corner of the table you are going to copy. In this example you would left click on RPM. This will highlight the entire table. Then go to EDIT and choose COPY.

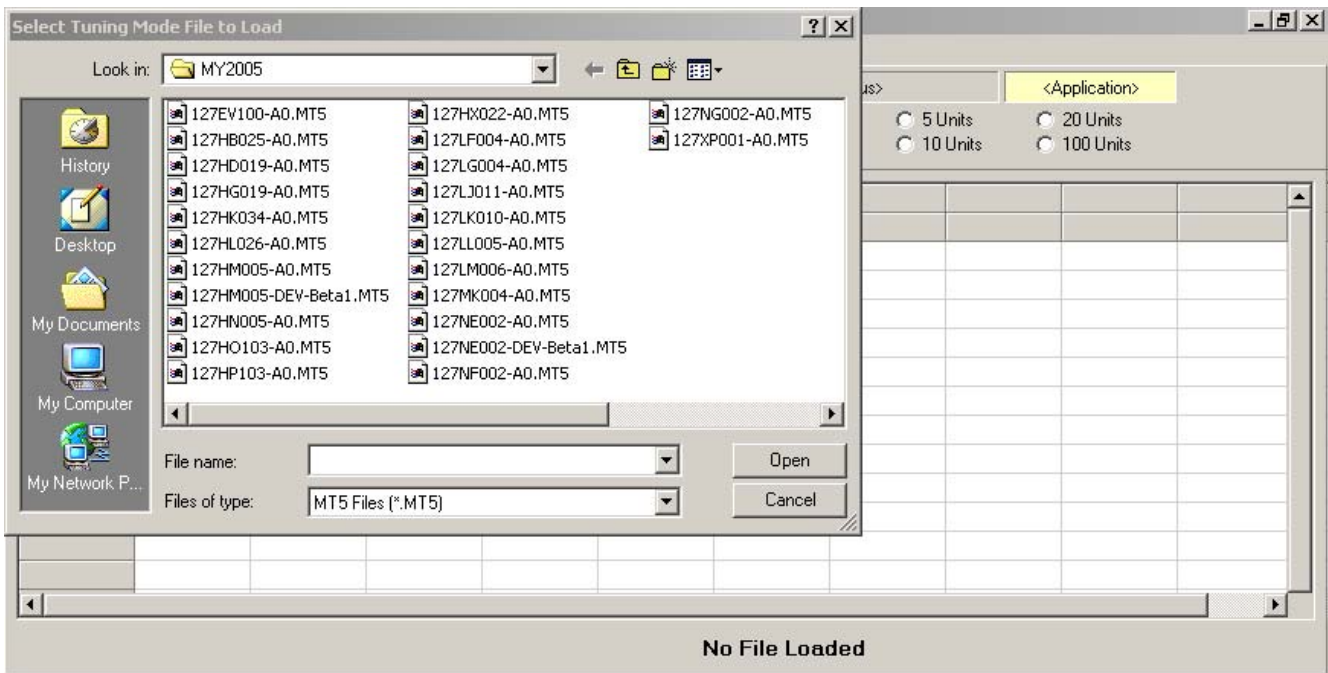
	20	30	40	50	60	70	80	90	100
750	13.8	13.8	13.8	13.8	13.8	13.0	12.4	11.5	11.5
1000	13.8	13.8	13.8	13.8	13.8	13.3	12.4	11.5	11.5
1250	13.9	13.9	14.2	14.2	13.8	13.5	12.7	11.6	11.5
1500	14.1	14.2	14.3	14.2	13.9	13.7	13.0	11.9	11.8
1750	14.1	14.3	14.3	14.1	13.9	13.6	13.0	12.4	12.3
2000	14.2	14.4	14.4	14.1	13.9	13.6	13.1	12.5	12.5
2250	14.2	14.4	14.5	14.2	13.9	13.6	13.2	12.5	12.5
2500	14.2	14.5	14.5	14.2	13.8	13.6	13.2	12.5	12.4
2750	14.1	14.5	14.5	14.2	13.6	13.4	13.1	12.3	12.4
3000	13.6	14.3	14.3	14.1	13.6	13.2	12.9	12.3	12.3
3500	13.2	13.9	13.9	13.8	13.4	13.2	12.8	12.2	12.2
4000	12.6	13.4	13.5	13.5	13.4	13.2	12.6	12.2	12.2
4500	12.3	12.9	13.0	13.0	12.9	12.8	12.5	12.1	12.1
5000	12.3	12.7	12.7	12.5	12.5	12.5	12.3	12.1	12.1
5500	12.3	12.5	12.5	12.5	12.4	12.4	12.1	12.0	11.8
6000	12.3	12.4	12.4	12.4	12.4	12.4	12.0	11.8	11.8

October 11, 2004

3. Open version 4.1.0, select the correct model year for the vehicle from the drop down menu.



4. Choose a file that is for the model you are working with and open the file.



October 11, 2004

5. Highlight the table, go to EDIT and select PASTE.

The screenshot shows the 'Tuning Mode - Advanced Mode Active' window. The 'Edit' menu is open, and the 'Paste' option (Ctrl+V) is highlighted. The main window displays a table of MAP (kPa) values for various RPM and throttle positions. The table is as follows:

	20	30	40	50	60	70	80	90	100
750	13.9	13.9	13.9	13.9	13.9	13.8	13.4	12.8	12.5
1000	13.9	13.9	13.9	13.9	13.9	13.8	13.4	12.8	12.5
1250	14.2	14.2	14.2	14.2	14.2	13.9	13.4	12.8	12.5
1500	14.4	14.4	14.4	14.4	14.3	14.1	13.4	12.8	12.5
1750	14.5	14.5	14.5	14.5	14.5	14.2	13.6	12.8	12.4
2000	14.5	14.5	14.5	14.5	14.5	14.3	13.6	12.8	12.4
2250	14.5	14.5	14.5	14.5	14.5	14.3	13.6	12.8	12.4
2500	14.5	14.5	14.5	14.5	14.5	14.3	13.6	12.8	12.4
2750	14.5	14.5	14.5	14.5	14.5	14.3	13.6	12.8	12.4
3000	14.5	14.5	14.5	14.5	14.5	14.3	13.6	12.8	12.4
3500	14.5	14.5	14.5	14.5	14.5	14.4	13.6	12.7	12.4
4000	14.5	14.3	14.2	14.2	14.2	13.9	13.4	12.6	12.4
4500	14.5	14.3	13.8	13.6	13.5	13.4	13.2	12.5	12.3
5000	14.5	14.3	13.8	13.3	13.1	13.0	12.8	12.4	12.2
5500	14.5	14.3	13.8	13.3	12.8	12.6	12.5	12.3	12.2
6000	14.5	14.3	13.8	13.3	12.8	12.6	12.5	12.3	12.2
7000	14.5	14.3	13.8	13.3	12.8	12.6	12.5	12.3	12.2

A green bar at the bottom of the window reads 'Air-Fuel Ratio - Edit Enabled'.

5. You will need to do this for every table you wish to transfer. After the tables are transferred then look at your ECM Tuning Constants from the old file and make the new file the same. You will then need to save and rename the file for the changes to take effect.

The screenshot shows the 'Tuning Mode - Advanced Mode Active' window. The 'File' menu is open, and the 'Save Tuning File As...' option (Ctrl+S) is highlighted. The main window displays a table of MAP (kPa) values for various RPM and throttle positions. The table is as follows:

	40	50	60	70	80	90	100		
3000	3.9	13.9	13.7	13.7	12.4	11.0	11.0		
3500	3.9	13.9	13.7	13.7	12.4	11.0	11.0		
4000	3.9	13.9	14.3	14.4	12.7	11.0	11.0		
4500	4.3	14.3	14.5	14.5	13.0	11.6	11.4		
1750	13.7	14.5	14.5	14.5	14.5	13.4	12.5	12.3	
2000	13.7	14.5	14.5	14.5	14.5	14.5	13.4	12.5	12.4
2250	13.7	14.5	14.5	14.5	14.5	14.5	13.4	12.6	12.4
2500	13.7	14.5	14.5	14.5	14.5	14.5	13.4	12.6	12.4
2750	13.3	14.5	14.5	14.5	14.5	14.5	13.4	12.6	12.4
3000	13.0	14.5	14.5	14.5	14.5	14.5	13.4	12.6	12.4
3500	12.5	14.5	14.5	14.5	14.5	14.5	13.4	12.5	12.4
4000	12.3	14.5	14.5	14.5	14.5	14.1	13.4	12.5	12.3
4500	12.3	13.5	13.5	13.5	13.5	13.5	13.2	12.5	12.0
5000	12.3	12.9	12.9	12.9	12.9	12.8	12.5	12.0	11.5
5500	12.3	12.5	12.5	12.5	12.5	12.4	12.4	12.0	11.5
6000	12.2	12.4	12.4	12.4	12.4	12.4	12.4	12.0	11.5
7000	12.2	12.4	12.4	12.4	12.4	12.4	12.4	11.5	11.0

A green bar at the bottom of the window reads 'Air-Fuel Ratio - Edit Enabled'.