

## BLAST TP SENSOR ADJUSTMENT AND DIAGNOSTICS

### Purpose

The purpose of this bulletin is to provide updated TP Sensor Adjustment and Troubleshooting instructions.

### Motorcycles Affected

The revised TP Sensor Adjustment and Troubleshooting procedures are for use on all 2000 and 2001 Blast P3 model motorcycles.

### Required Dealer Action

Use the procedures contained in this bulletin in lieu of the procedures in both the 2000 and 2001 Service Manuals.

### Adjustment

#### NOTE

To gain access to the Throttle Position Sensor, remove the carburetor and air box as an assembly. See Section 4 of the appropriate service manual for procedure.

1. Adjust throttle position sensor as follows:
  - a. Back off idle adjustment screw so throttle plate is fully closed.
  - b. Completely open and close the throttle by rotating the throttle control through its full range of motion.
  - c. Using special TORX bit (Snap-on® TTXR20E), loosen the two tamper-resistant T20 TORX screws just enough to allow sensor to rotate.
  - d. Disconnect pin 3 in connector [88B] (main wire harness).
  - e. Install Breakout Box Adaptors (HD-42962) and Breakout Box (HD-42682) using black connectors between connector halves [88A] and [88B].
  - f. Turn ignition switch to ON. Using a multimeter, measure voltage between pin 3 (V/W) and pin 5 (BK).
  - g. Adjust (rotate) throttle position sensor (TPS) until voltage reading is 0.5V +/- 0.05V.
  - h. Completely open and close the throttle by rotating the throttle control through its full range of motion. Wide Open Throttle (WOT) should not exceed 3.7V and reading should increase consistently as throttle is opened. If the voltage reading is erratic or the voltage reading at WOT exceeds 3.7V see Figure 2. for diagnostic testing.

#### NOTE

After WOT, the TPS reading may not return back to exactly 0.5V +/- 0.05V. To re-check exact TPS voltage reading, turn cycle key off and on.

- i. Tighten TP Sensor mounting screws to 13-23 in-lbs (1.5-2.6 Nm).

2. Install carburetor and air box. See section 4 of the appropriate service manual for procedure.

#### WARNING

**Pull up on seat to verify that it is properly secured, front and rear. A loose seat may shift during vehicle operation and startle the rider, possibly causing loss of vehicle control that could result in death or serious injury.**

3. Adjust engine idle speed, as follows:
  - a. Run engine at normal operating temperature.
  - b. Adjust the throttle stop screw so the engine idles at 1200 rpm.

#### NOTE

To measure engine rpm, use a hand held inductive tachometer (Snap-on® ONO-SE-1100) to pick up the signal off the spark plug cable.

ROUTING	SERVICE MANAGER	SALES MANAGER	PARTS MANAGER	LEAD TECHNICIAN	TECHNICIAN NO. 1	TECHNICIAN NO. 2	TECHNICIAN NO. 3	TECHNICIAN NO. 4	RETURN THIS TO:
INITIAL HERE									

©2001 Buell Distribution Corporation

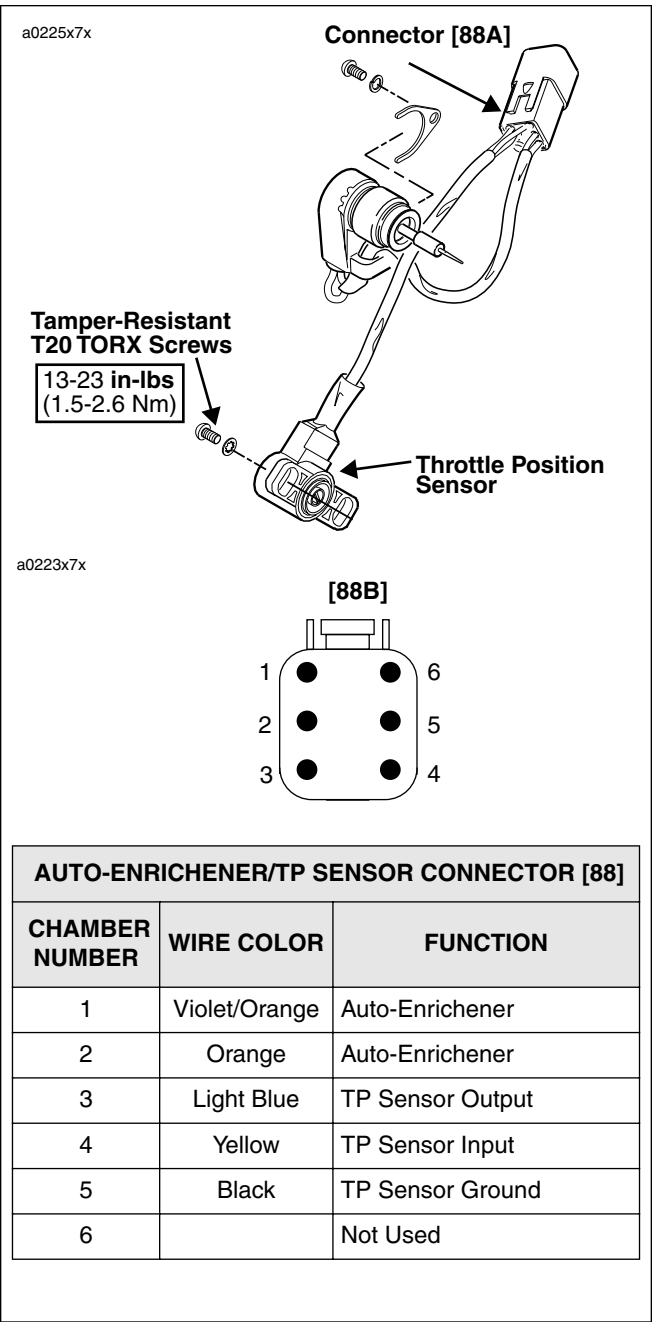


Figure 1. Throttle Position Sensor

# DRIVABILITY TROUBLESHOOTING - Poor Performance, Poor Fuel Economy, Excessive Pinging

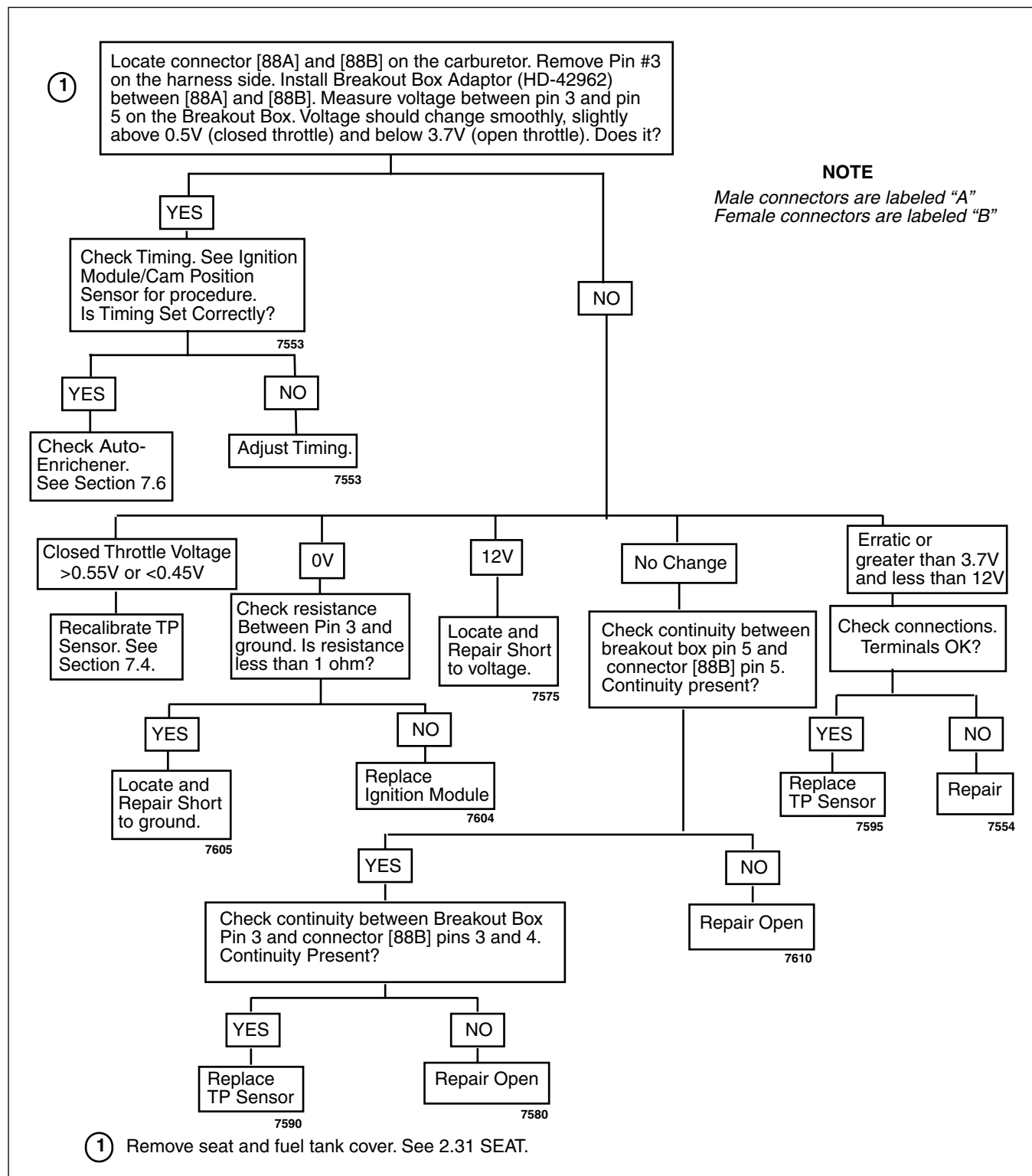


Figure 2. Drivability Troubleshooting