

## Safety Recall Code 0805

### 1995 and 1996 S2/S2-T California Models (Qwiksilver Carburetors)

#### General

Buell Motorcycle Company has decided that there is a safety related defect with Qwiksilver carburetor used on certain 1995 and 1996 S2 and S2-T California model Buell motorcycles. The throttle cable wheel of the carburetor could move on its shaft and come in contact with the carburetor support bracket. This could prevent the throttle from returning to the at-rest position.

As a precautionary measure, Buell Motorcycle Company elected to initiate a voluntary recall in the interest of motor vehicle safety. The condition will be remedied by replacing the throttle shaft on all potentially affected vehicles.

#### Dealer Action, Affected Vehicles

Buell Distribution Corporation has attached a complete list of all vehicles involved in this recall. This list is in V.I.N. order. To ensure the safety of all affected riders, it is your responsibility to perform the required service on all affected vehicles, even if the motorcycle was not purchased from your dealership.

If you are not sure that a safety recall has been completed on a particular Buell motorcycle, contact the recall hotline at 1-800-448-1708.

#### IMPORTANT NOTE

***Because only registered owners, as shown on the attached list, will receive notification from Buell Distribution Corporation, we request that you contact any owners of vehicles still listed as unregistered. Advise them of the safety recall and make arrangements for them to come in for recall service. We also require that you provide us with their names, addresses and V.I.N.s as soon as possible. This will enable to mail them an owner's letter as required by National Traffic and Motor Vehicle Safety Act, as amended.***

Shipment of replacement throttle shaft kits, Part No. 93772Y, will begin on or before December 4, 1995. Your total requirement of kits for all affected vehicles will be shipped direct from Buell Motorcycle Company, no charge, transportation paid. The kits will contain the following items:

#### Qty. Part No. Description

2	29376-95Y	Gasket
1	29377-95Y	Snap ring
1	29378-95Y	Throttle shaft
1	62048-94Y	Hose clamp

#### Air Cleaner Removal

##### ⚠ WARNING

Gasoline can be extremely flammable and highly explosive. Do not smoke or allow open flame or sparks when refuelling or servicing the fuel system. Inadequate safety precautions may result in seriously personal injury and/or property damage.

##### ⚠ CAUTION

Air cleaner cover has a flange lip on the lower rear edge. When properly installed, the backplate fits between the lip and the filter element. Care must be taken not to damage this lip when removing air cleaner cover from backplate.

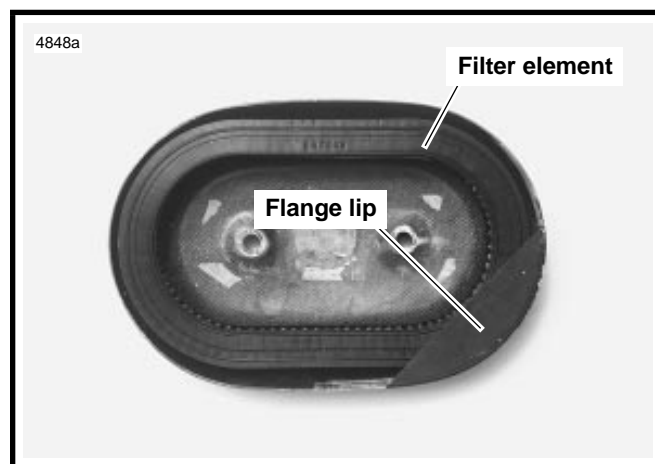
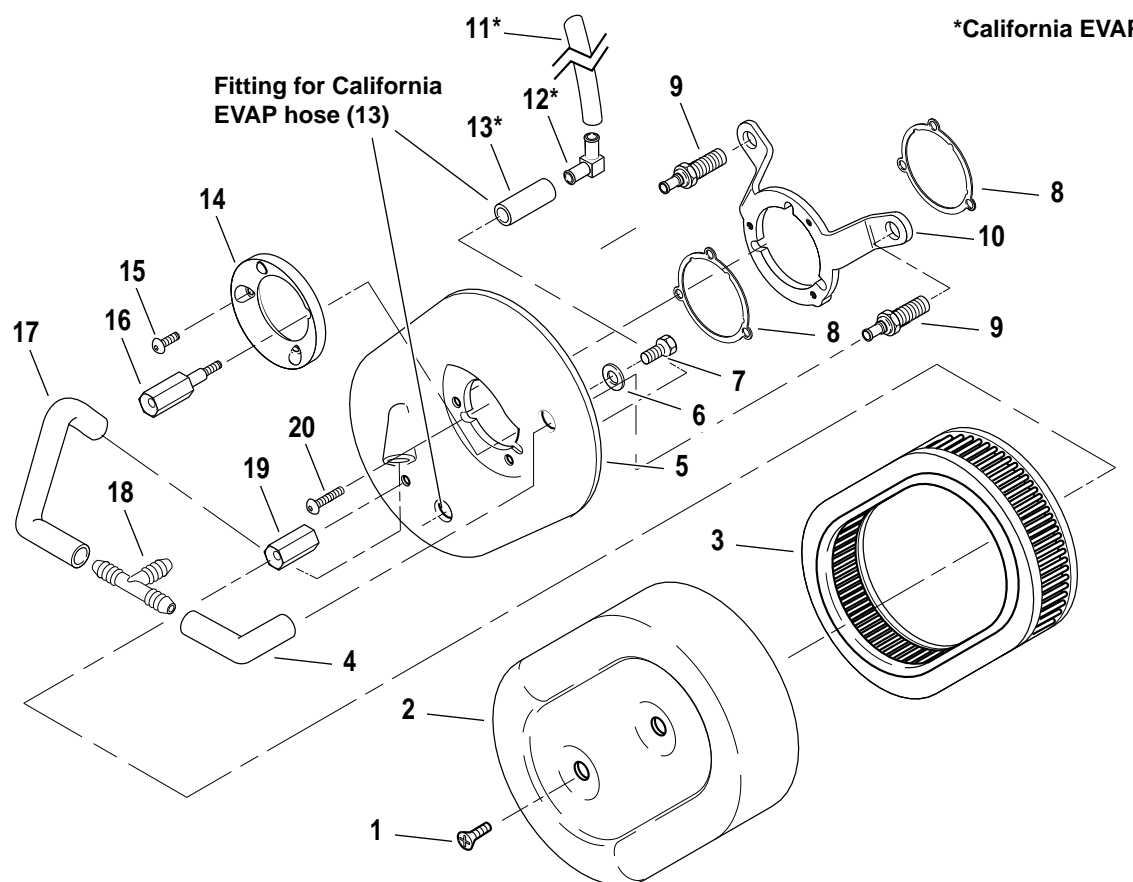


Figure 1. Air Cleaner Cover Flange

1. Turn fuel supply valve to OFF.
2. Remove right fairing lower on S2-T models.
3. See Figure 2. Remove two screws (1) from air cleaner cover (2). Remove cover by tilting top of cover outward and then sliding the cover down from the backplate (5).
4. Remove filter element.
5. Remove breather hoses (4, 17) from breather bolts (9).
6. Remove EVAP hose (13) from backplate (5).
7. Remove venturi screws (15) and venturi spacer screw (16). Remove venturi (14).
8. Remove backplate screws (20). Remove backplate (5) and front gasket (8) from backplate mount (10). Remove breather bolts (9). Remove backplate mount (10) and rear gasket (8).

ROUTING	SERVICE MANAGER	SALES MANAGER	PARTS MANAGER	LEAD TECHNICIAN	TECHNICIAN NO. 1	TECHNICIAN NO. 2	TECHNICIAN NO. 3	TECHNICIAN NO. 4	RETURN THIS TO:
INITIAL HERE									



- |                                      |                        |                          |                                      |
|--------------------------------------|------------------------|--------------------------|--------------------------------------|
| 1. Screw (2)                         | 6. Flatwasher          | 12. Tee                  | 17. Breather hose head to tee (rear) |
| 2. Cover                             | 7. Bolt                | 13. EVAP hose            | 18. Tee                              |
| 3. Filter element                    | 8. Gasket (2)          | 14. Venturi              | 19. Spacer                           |
| 4. Breather hose head to tee (front) | 9. Breather bolt (2)   | 15. Venturi screw (2)    | 20. Backplate screw (3)              |
| 5. Backplate                         | 10. Backplate mount    | 16. Venturi spacer screw |                                      |
|                                      | 11. EVAP canister hose |                          |                                      |

Figure 2. Air Cleaner Assembly

## Carburetor Removal

1. Remove and discard fuel line clamp.

### ⚠WARNING

A small amount of gasoline may drain from the fuel hose when disconnected from the carburetor. Thoroughly wipe up any spilt fuel immediately and dispose of rags in a suitable manner. Gasoline can be extremely flammable and highly explosive. Inadequate safety precautions may result in serious personal injury and/or property damage.

2. Remove fuel line from fuel banjo on carburetor float bowl.
3. Remove enrichener cable end and spring from the enrichener slot. Loosen lock nut on enrichener cable and remove cable from enrichener bracket.
4. Pull carburetor from rubber manifold.
5. Remove V.O.E.S. hose from carburetor fitting. On California models, remove vacuum line from elbow fitting on carburetor.
6. Remove Phillips pan head screw and cable bracket.
7. Disconnect both throttle cables from outside wheel. Remove carburetor from vehicle.

## Carburetor Disassembly

1. See Figure 3. Remove three cap retaining screws (1) and cable bracket mount (2). Remove cap (3) from top of carburetor. Retain gasket (4).
2. Remove and discard snap ring (5) from throttle shaft (6). Remove washer (12) and retain O-ring (13).
3. Loosen and remove inside wheel set screw (9).
4. Remove outside wheel (10) and shaft assembly from carburetor body.
5. Retain spring, all washers, o-rings, and shaft bushings. Shaft bushings should remain pressed in carburetor body.
6. Loosen set screw (11) on outside wheel and remove shaft.

## Carburetor Assembly

1. Install **new** snap ring (5) on shaft.
2. Install washer (12) and O-ring (13) on shaft.
3. Slide shaft assembly through carburetor body and inside wheel (14).

4. Remove freeplay so O-ring (13) seats lightly against shaft bushing (15) and center inside wheel (14).
5. Apply LOCTITE THREADLOCKER 242 (blue) to inner wheel set screw (9) and tighten in position on flat area of shaft.
6. Install O-ring (8), washer (7) and slide return spring (16).
7. Install outside wheel (10).
8. Apply LOCTITE THREADLOCKER 242 (blue) to outside wheel set screw (11) and tighten in position on flat area of shaft.
9. Check throttle shaft for free movement.
10. Install cap (3), cap gasket (4) and cable bracket mount (2).

#### NOTE

*Make sure that the outside wheel assembly is rotated slightly during cap installation so that the idle adjustment screw contacts the cap properly after assembly.*

### Carburetor Installation

1. Install enrichener cable assembly.
2. Connect throttle cables to outside wheel. Install throttle cable bracket on carburetor with Phillips pan head screw.
3. Attach V. O. E. S. hose to fitting. Connect vacuum hose to elbow fitting on carburetor.
4. Push carburetor body into seal ring.
5. Connect fuel line using a **new** clamp and HOSE CLAMP PLIERS (Part No. HD-41137).

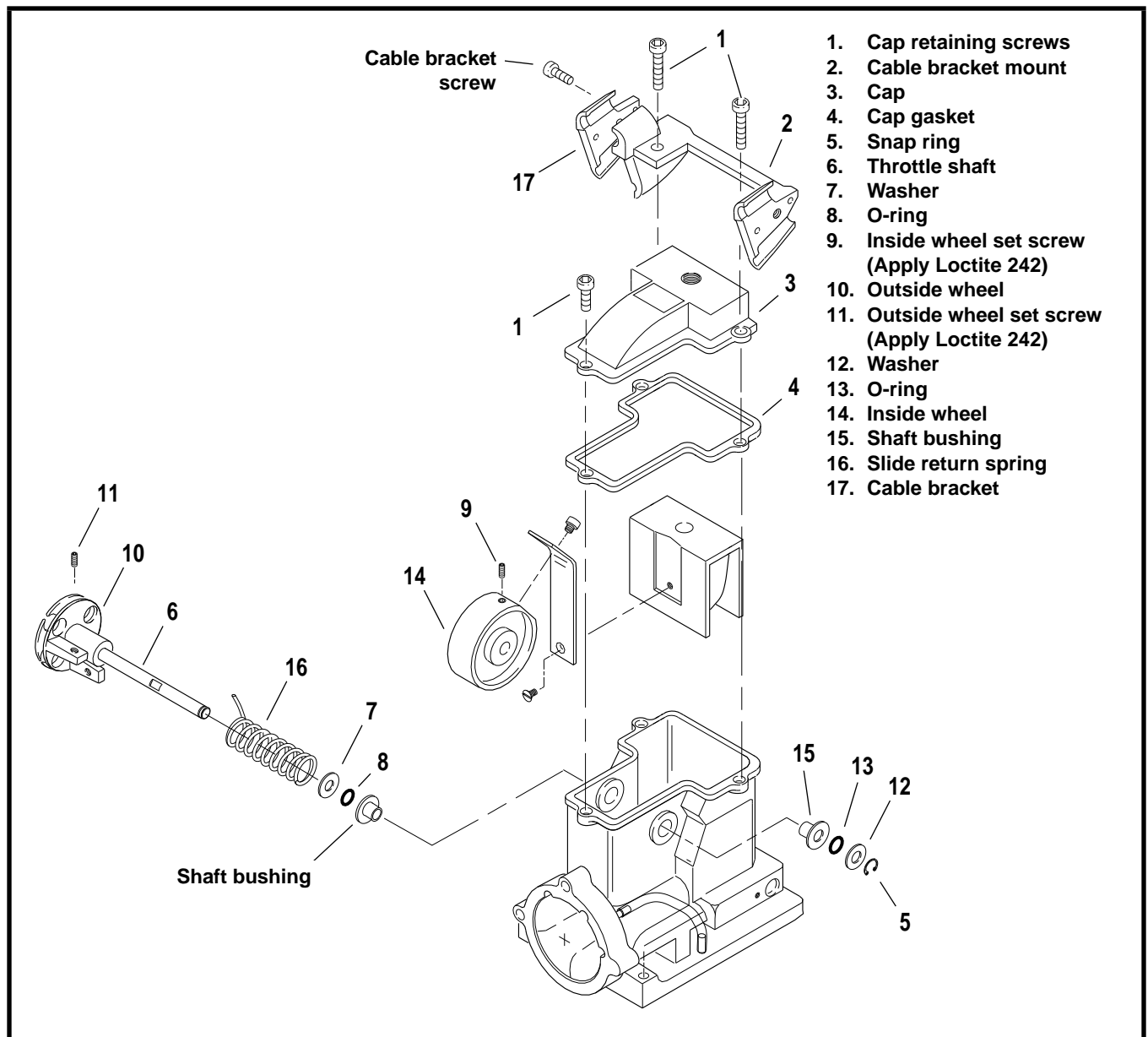


Figure 3. Carburetor Disassembly

## Air Cleaner Installation

1. See Figure 2. Place gasket (8) behind backplate mount (10). Apply LOCTITE THREADLOCKER 242 (blue) to backplate screws (20). Loosely start a single screw (20) through the top hole of backplate mount (10).
2. Apply HYLOMAR to threads of breather bolts (9). Place breather bolts (9) through backplate mount (10) into cylinder heads. Tighten breather bolts (9) to 30-35 ft-lbs (41-47 Nm) torque.
3. Connect breather hoses (4,17) to breather bolts (9).
4. Align backplate mount and install two backplate screws (20) in lower holes. Tighten all backplate screws (20) to 3-5 ft-lbs (4-7 Nm) torque.
5. Place EVAP hose (13) through backplate (5).
6. Apply LOCTITE THREADLOCKER 242 (blue) to venturi screws (15) and spacer screw (16). Install venturi (14) using screws (15,16). Tighten to 3-5 ft-lbs (4-7 Nm) torque.
7. Place air cleaner filter element (3) inside cover (2).
8. Apply LOCTITE THREADLOCKER 242 (blue) to screws (1). Fit air cleaner cover (2) onto backplate (5) and install screws (1). Tighten screws to 3-5 ft-lbs (4-7 Nm) torque.
9. If necessary, tighten cable straps securing EVAP canister hose (11) to frame.
10. Install right fairing lower on S2-T models.

## Claim Filing Procedures

After servicing each vehicle, complete a Buell Distribution Corporation Warranty Claim form (P/N 99520-95Y) referencing Safety Recall 0805 in the "Description of Repair" section. Fill in the rest of the claim form as follows:

<b>Claim Type</b>	BRC
<b>Quantity</b>	0
<b>Event 1, Problem P/N</b>	93772Y
<b>Part Description</b>	Throttle Shaft Kit
<b>Primary Labor Code</b>	3518
<b>Time (Includes 0.1 Hr Admin Time)</b>	S2-0.8 S2-T - 1.0
<b>Customer Concern Code</b>	9902
<b>Condition Code</b>	3103

Destroy the replacement shaft. Send your claim form to Buell Distribution Corporation. Upon receipt of the claim you will be credited for labor as noted above. No credit will be issued for the kits as they were sent no charge, transportation paid.