

SERVICE BULLETIN



M-1159

October 01, 2004

AUSTRALIAN STATIONARY NOISE LABEL

Purpose

The purpose of this bulletin is to advise dealers that an incorrect noise label was installed on certain Australian motorcycles.

Motorcycles Affected

Certain 2004 model FLHTCSEI, 883/1200 XL, Buell XB9R/S & XB12R/S motorcycles. All vehicles shipped to your dealership are identified by the attached VIN list.

Customer Notification

Dealers need to contact customers of affected vehicles and ask that the motorcycle be brought in for this service to be performed.

Required Dealer Action

Install **new** label over old label when the bike is in for other Services. A new label for each vehicle shipped to your dealership is also attached.

Location

1. See [Figure 1](#) for Sportster models.
2. See [Figure 2](#) Buell Models.
3. See [Figure 3](#) for CVO model FLHTCSE.

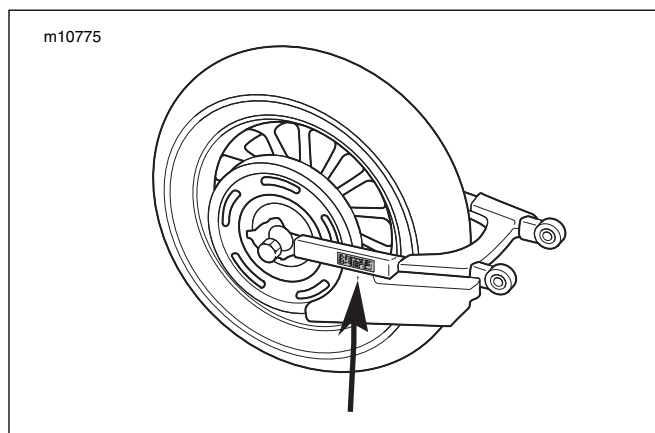


Figure 1 Noise Label Location/Sportster

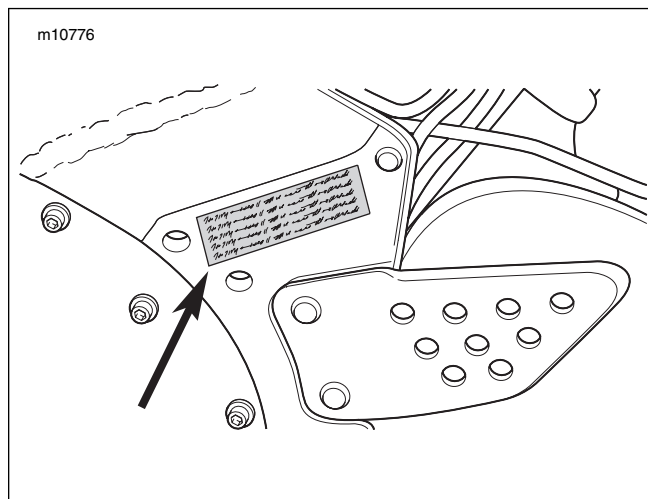


Figure 2 Noise Label Location/Buell

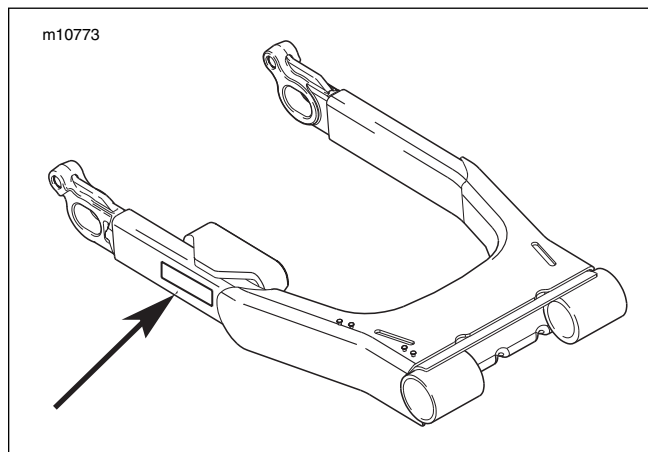


Figure 3 Noise Label Location/FLHTCSE

Installation

1. Clean surface of old label with hot, soapy water. Thorough cleaning is necessary for new label to adhere to old label. Dry surface completely before installing new label.
2. Install new label over old label.

NOTE

On FLHTCSEI models, it will be necessary to remove the right saddlebag assembly in order to install the noise label.

IMPORTANT NOTE

In the interest of preserving customer safety and satisfaction, always check for outstanding recalls whenever any motorcycle is brought into your dealership for either maintenance or service.

ROUTING	SERVICE MANAGER	SALES MANAGER	PARTS MANAGER	LEAD TECHNICIAN	TECHNICIAN NO.1	TECHNICIAN NO. 2	TECHNICIAN NO. 3	TECHNICIAN NO. 4	RETURN THIS TO
INITIAL HERE									

©2004 HARLEY-DAVIDSON MOTOR COMPANY

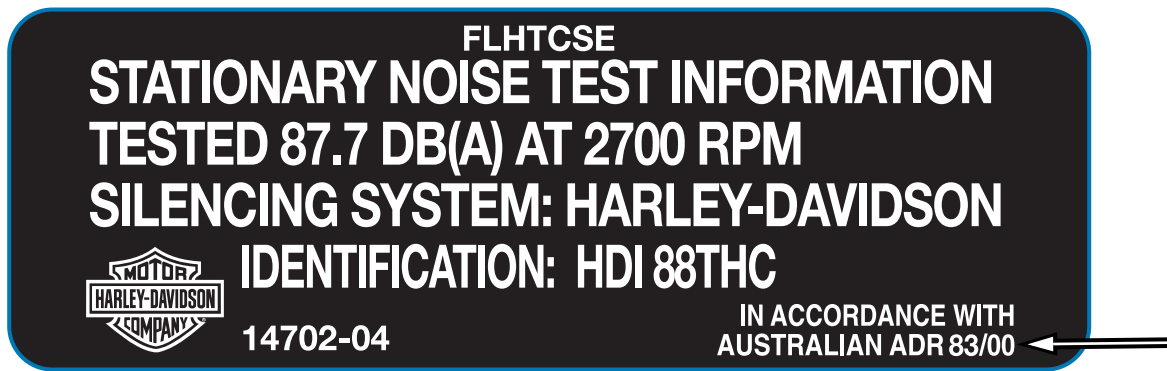


Figure 4. Noise Label for Australia (Typical) with Correct ADR Number

NOTE

- The correct ADR number is 83/00. The old or incorrect ADR number is 39/00.
- DB level and RPM will be different for each model.

Credit Procedure

For each vehicle serviced, complete a regular warranty claim referencing Service Bulletin M-1159. Fill in the rest of the claim as follows:

Table 1. Warranty Claim Information

Claim Type	Part No.	Model
Event 1, Problem Part No., Qty., Description	1-C0317.2A8A Noise Label	XB9R/S
	1-C0317.1AAA Noise Label	XB12R/S
	1-14702-04 Noise Label	FLHTCSE
	1-14190-04 Noise Label	1200XL
	1-14258-04 Noise Label	883XL
Customer Concern Code	9203	
Condition Code	9102	
Primary Labor Code, Time	2294-0.1	

Upon receipt and processing of the properly completed claim, you will be credited for the label and 0.2 hours for labor.