

SERVICE BULLETIN



M-1156

California Only

August 16, 2004

2004 VRSC AUXILIARY VOLUME REPLACEMENT PRODUCT PROGRAM P13

Purpose

Harley-Davidson has recently learned that certain 2004 VRSC model motorcycles shipped to the state of California are equipped with an international (HDI) catalyst-containing auxiliary volume not intended for the California market. In the interest of customer satisfaction, Harley-Davidson has elected to replace the auxiliary volume on all affected motorcycles with the appropriate exhaust component.

Motorcycles Affected

Certain 2004 VRSC model motorcycles shipped to the state of California and equipped with the HDI auxiliary volume. As many as 134 motorcycles are affected.

IMPORTANT NOTE

All affected motorcycles also have the incorrect emissions decal installed on the right side of the lower airbox (see Service Bulletin M-1155 for details). To minimize the inconvenience to our customers, Harley-Davidson strongly advises that the auxiliary volume and emissions decal replacement procedures be scheduled and performed at the same time.

Customer Notification

Attached is a complete list of all affected motorcycles shipped to your dealership. It is our mutual responsibility to see that the required service is performed and that the exhaust system configuration intended for California 2004 VRSC model motorcycles is implemented.

IMPORTANT NOTE

Because only registered owners as shown on the attached list will receive notification from us, we request that you contact any owners of vehicles still listed as unregistered. Advise them of the situation and make arrangements for them to come in for the required service.

Required Dealer Action

Removal

WARNING

To avoid accidental start-up of vehicle and possible personal injury, remove the maxi-fuse before proceeding. Inadequate safety precautions could result in death or serious injury.

1. Remove right side cover and maxi-fuse. See Section 8.5 MAXI-FUSE, page 8-7 of the 2004 VRSC Models Service Manual (Part No. 99501-04).
2. Remove three T25 TORX screws to free upper heat shield from auxiliary volume. Remove two screws to release lower heat shield. See Figure 1.
3. Remove five square nuts from saddles on auxiliary volume.
4. Loosen TORCA clamp between auxiliary volume and upper muffler.
5. Remove two allen head screws to free upper muffler from lower muffler. For best results, spray PB Blaster or other suitable penetrating oil on and around screws after loosening. Allow sufficient time for penetrating oil to work.
6. Pull and wiggle upper muffler to remove from auxiliary volume. Remove and discard TORCA clamp.
7. Loosen TORCA clamp between auxiliary volume and lower muffler.
8. Remove allen head screw (with flat washer) to release rear of exhaust support bracket from lower muffler. Remove screw (with flat washer and L-bracket) to release front of exhaust support bracket from auxiliary volume.
9. Pull and wiggle lower muffler to remove from auxiliary volume. Remove and discard TORCA clamp.
10. Remove flange nut from pin on inboard side of auxiliary volume. If necessary, insert punch through hole in pin and hold to prevent rotation. Remove pin.
11. Loosen two-sided TORCA clamp between auxiliary volume and front and rear header pipes.

IMPORTANT NOTE

In the interest of preserving customer safety and satisfaction, always check for outstanding recalls whenever any motorcycle is brought into your dealership for either maintenance or service.

ROUTING	SERVICE MANAGER	SALES MANAGER	PARTS MANAGER	LEAD TECHNICIAN	TECHNICIAN NO.1	TECHNICIAN NO. 2	TECHNICIAN NO. 3	TECHNICIAN NO. 4	RETURN THIS TO
INITIAL HERE									

©2004 HARLEY-DAVIDSON MOTOR COMPANY

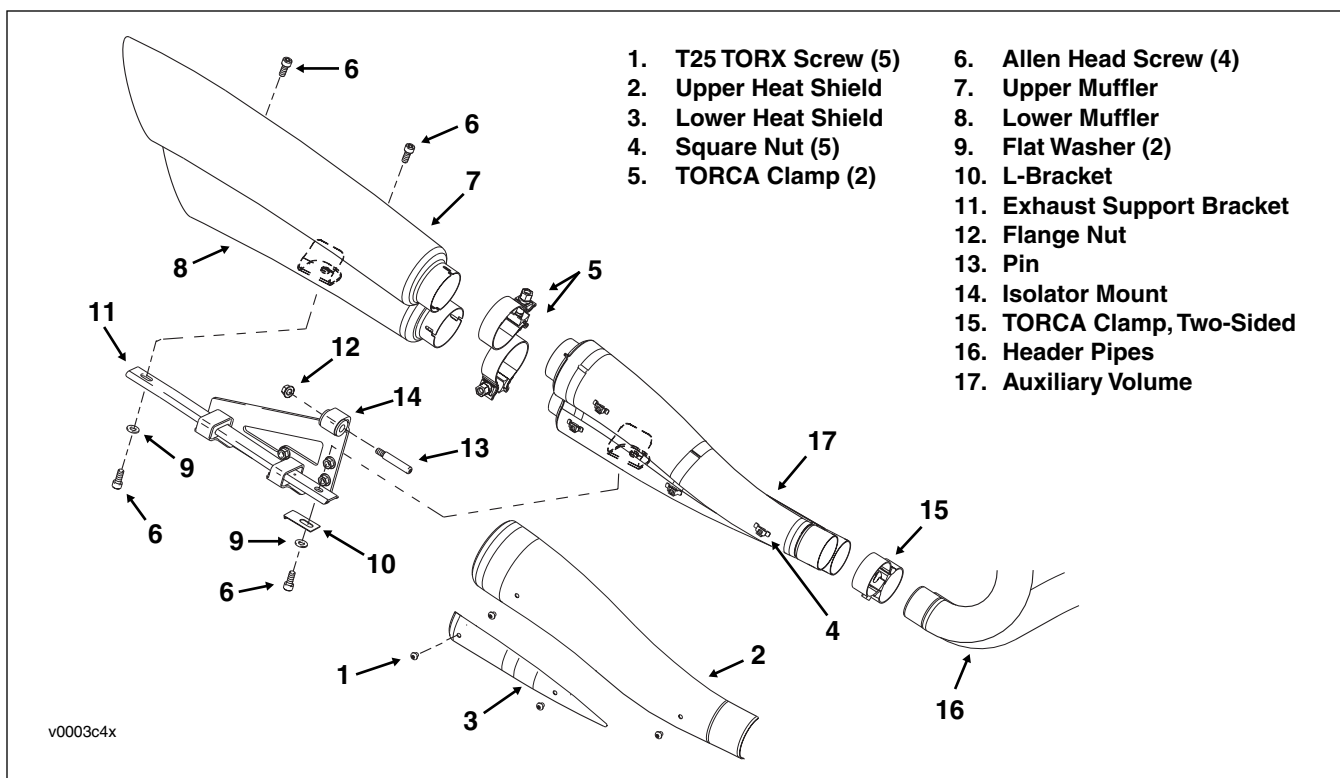


Figure 1. Remove Auxiliary Volume

12. Pull and wiggle auxiliary volume to remove from front and rear header pipes. Remove and discard two-sided TORCA clamp.
13. Destroy and discard auxiliary volume.

Installation

1. Obtain the following parts from stock.

Table 1. Required Parts

Part	Part Number	Quantity
Auxiliary Volume	65151-01	1
TORCA Clamp (Two-Sided)	65043-01A	1
TORCA Clamp	65108-01	2

2. Slide **new** two-sided TORCA clamp onto pipes at front of **new** auxiliary volume. Orient clamp so that nut is at the bottom facing the outboard side. Push and wiggle auxiliary volume onto front and rear header pipes.
3. Place 1/2 inch spacer between bottom of auxiliary volume and top of lower frame tube to gauge approximate position of assembly.
4. Align flange on inboard side of auxiliary volume with isolator mount on exhaust support bracket. Slide threaded end of pin through isolator mount and flange.
5. Apply a small dab of Loctite Medium Strength Threadlocker 243 (blue) to threads of pin. Install flange nut and tighten to 23 Nm (17 ft-lbs). If necessary, insert punch through hole in pin and hold to prevent rotation.

6. Slide **new** TORCA clamp onto lower muffler. Orient clamp so that nut is at the bottom facing the outboard side. Push and wiggle lower muffler onto auxiliary volume.
7. Install allen head screw (with flat washer and L-bracket) to secure front of exhaust support bracket to auxiliary volume. Tighten screw to 23 Nm (17 ft-lbs).

NOTE

To prevent exhaust system from sliding rearward, be sure to install L-bracket with the lip down and in contact with forward rubber mount on exhaust support bracket.

8. Slide **new** TORCA clamp onto upper muffler. Orient clamp so that nut is at the bottom facing the outboard side. Push and wiggle upper muffler onto auxiliary volume.
9. Apply a small dab of Loctite Medium Strength Threadlocker 243 (blue) to threads of two allen head screws. Install screws to fasten upper muffler to lower muffler. Alternately tighten screws to 23 Nm (17 ft-lbs).
10. Install allen head screw (with flat washer) to secure rear of exhaust support bracket to lower muffler. Tighten screw to 23 Nm (17 ft-lbs).
11. Move each TORCA clamp so that the outboard edge is flush with the edge of each exhaust pipe. Tighten two-sided TORCA clamp between auxiliary volume and front and rear header pipes to 32-37 Nm (24-27 ft-lbs). Tighten TORCA clamps between auxiliary volume and upper and lower mufflers to 65 Nm (48 ft-lbs).
12. Remove 1/2 inch spacer between bottom of auxiliary volume and top of lower frame tube.

13. Install five square nuts into saddles on auxiliary volume.
14. Apply a small dab of Loctite Medium Strength Thread-locker 243 (blue) to threads of five T25 TORX screws. Start two screws to fasten lower heat shield to auxiliary volume. Start three screws to install upper heat shield. Alternately tighten screws to 4.5-7.5 Nm (40-66 **in-lbs**).
15. Install maxi-fuse and right side cover. See Section 8.5 MAXI-FUSE, page 8-7 of the 2004 VRSC Models Service Manual (Part No. 99501-04).

Credit Procedures

Complete a separate warranty claim for each vehicle serviced. Reference Service Bulletin M-1156 in the "Comments" or "Notes" section and be sure to include the VIN of the vehicle on which the service was performed. Fill in the rest of the claim as follows:

Claim Type		P13
Event 1, Problem Part No.		64929-01A
Part Description		Auxiliary Volume
Quantity		0
Event 1, Additional Parts	Part Number	65151-01
	Description	Aux. Volume
	Quantity	1
	Part Number	65043-01A
	Description	TORCA Clamp
	Quantity	1
	Part Number	65108-01
	Description	TORCA Clamp
	Quantity	2
Labor Code		2638
Time		0.5 hrs.
Customer Concern		9203
Condition Code		9102

Upon receipt of the properly completed claim, you will receive the part and labor credit shown above.

IMPORTANT NOTE

This warranty claim should cover replacement of the auxiliary volume only. Following the Credit Procedure described in Service Bulletin M-1155, complete a separate warranty claim if the emissions decal was also replaced.