

# SERVICE BULLETIN

M-1152

April 23, 2004



## 2004 SPORTSTER FUEL TANK CONSOLE

### Purpose

As a running change, the XL Custom fuel tank console assembly has been redesigned to minimize the potential for console fitment complaints and seat damage. This bulletin describes how to identify these problems and replace consoles on affected vehicles.

### Motorcycles Affected

All 2004 XL 1200 Custom models produced before 2/17/04.

### Required Dealer Action

If any of the following conditions exist, follow the instructions under **Procedure** below to replace the console assembly:

- If the seat has been damaged by the pin and clip assembly attached to the rear end of the console.\*
- If the metal console is loose from the plastic liner.
- If the metal console rattles.
- If there are exposed sharp edges on the metal console.

When the condition(s) exist which require console replacement, order the redesigned console, Part No. 71276-04A, through normal parts order process. You will be billed accordingly and reimbursed when you file a claim. See Credit Procedure.

\* Replace seat if it has been cut or torn. If the integrity of the seat has not been compromised and damage is in a non-visible area, seat is deemed acceptable and is not to be replaced.

### Procedure

#### Special Tools Needed

- Console Alignment Ring HD-47114.
- Temporary use of a smaller diameter fuel filler cap (H-D Part Number 61272-92B). This is the original equipment cap found on 2004 or later XL883 and XL1200R Sportsters, as well as many other Harley-Davidson models.
- Approximately 18 in. (0.46 M) fishing line (or string) to aid in removing the existing console.

### Removal

1. Refer to the Sportster Models Service Manual and follow the instructions given to remove the seat. Retain all seat mounting hardware.

### WARNING

Stop the engine when refueling or servicing the fuel system. Do not smoke or allow open flame or sparks near gasoline. Gasoline is extremely flammable and highly explosive, which could result in death or serious injury. (00002a)

2. See Figure 1. Remove the original fuel filler cap (2) from the fuel tank (1) and set it aside. Obtain a small diameter Harley-Davidson fuel filler cap (5) and screw it into the fuel filler opening.

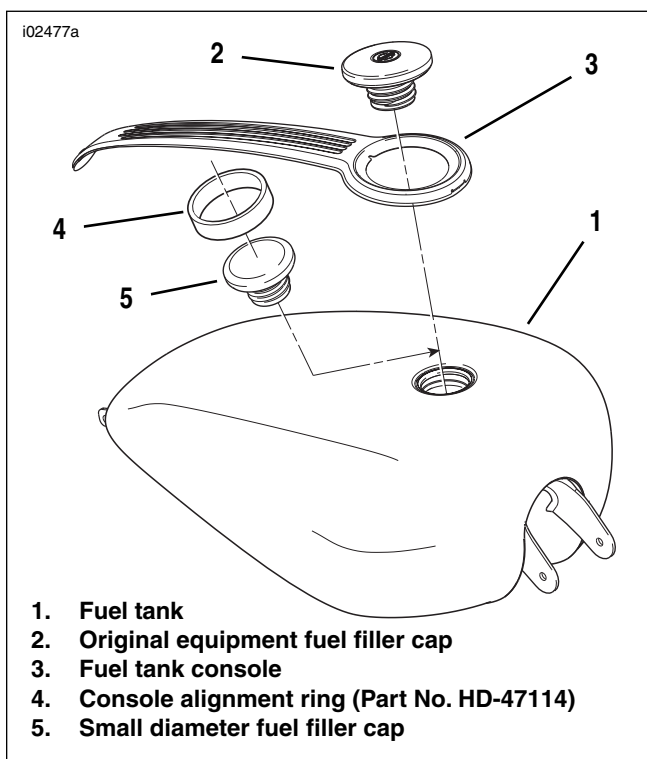


Figure 1. Console Installation

#### IMPORTANT NOTE

In the interest of preserving customer safety and satisfaction, always check for outstanding recalls whenever any motorcycle is brought into your dealership for either maintenance or service.

ROUTING	SERVICE MANAGER	SALES MANAGER	PARTS MANAGER	LEAD TECHNICIAN	TECHNICIAN NO.1	TECHNICIAN NO. 2	TECHNICIAN NO. 3	TECHNICIAN NO. 4	RETURN THIS TO
INITIAL HERE									

©2004 HARLEY-DAVIDSON MOTOR COMPANY

3. See Figure 2. Insert the fishing line (2) between the rear of the fuel tank and the plastic liner (1) on the underside of the original console.

**NOTE**

*Raise the ends of the fishing line away from the fuel tank to avoid scuffing the tank finish.*

4. Using a side-to-side “sawing” motion, work the fishing line toward the front of the fuel tank to break the adhesive bond between the console and the tank.
5. Carefully remove the console and liner from the fuel tank and discard it.

**CAUTION**

**Be careful not to scratch the paint on the fuel tank when removing the adhesive.**

**NOTE**

*To avoid damaging the fuel tank finish, do not use tools or abrasive cleaners to remove the adhesive residue that remains on the fuel tank surface. Try to stay within the area that will be covered by the new console.*

6. See Figure 3. To remove any adhesive residue remaining on the fuel tank surface:
  - a. Carefully peel off as much adhesive as possible, using your thumb and fingers only.

**WARNING**

**Observe warnings on labels of cleaning compounds. Failure to follow warnings could result in death or serious injury. (00076a)**

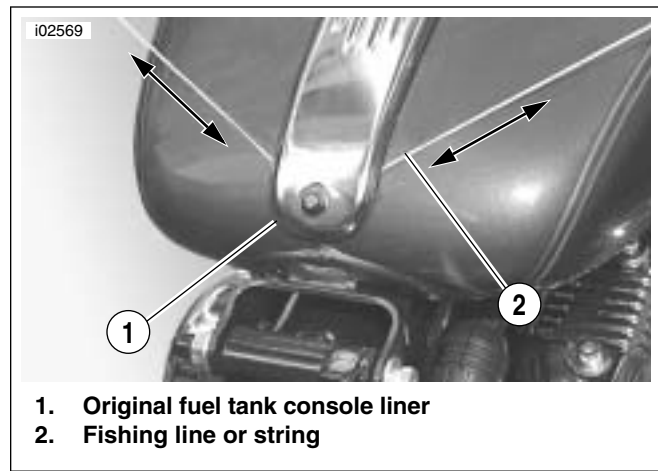
**CAUTION**

**Use of cleaning compounds other than isopropyl alcohol may damage fuel tank finish. Test in inconspicuous area.**

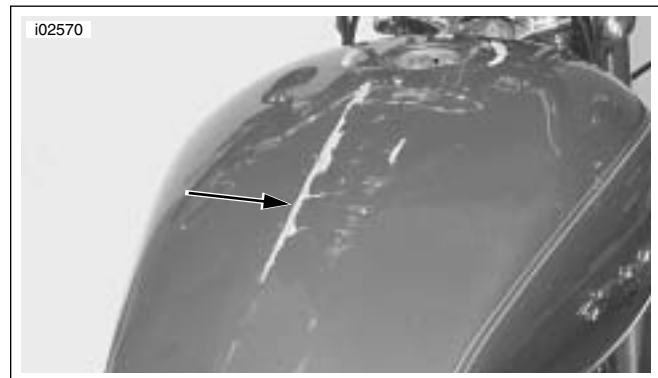
- b. Clean the top of the fuel tank with a mixture of 50% to 70% isopropyl alcohol and 30% to 50% distilled water or, if necessary, straight isopropyl alcohol.
- c. Allow the fuel tank surface to dry thoroughly

**Installation**

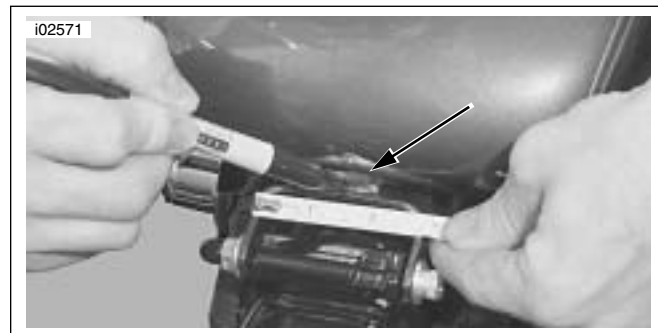
1. See Figure 4. Measure and mark the centerline of the fuel tank at the rear of the tank.
2. Obtain the **new** fuel tank console. Measure and mark the centerline of the console at the rear of the panel.
3. See Figure 5. Place Console Alignment Ring (Part No. HD-47114) over the fuel filler cap.



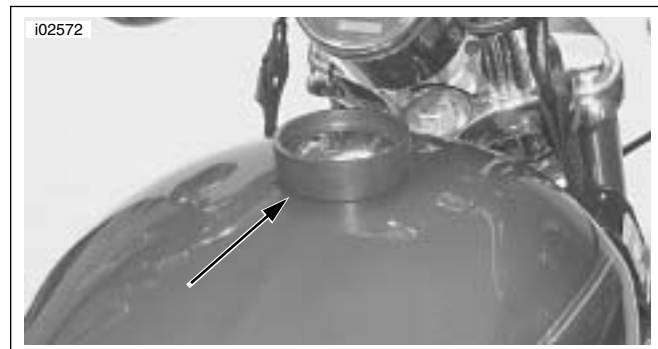
**Figure 2. Removing Existing Console**



**Figure 3. Removing Adhesive Residue**



**Figure 4. Marking Fuel Tank Centerline**



**Figure 5. Placing Console Alignment Ring Tool (Part No. HD-47114)**

4. Peel the liner from the adhesive backing of the console.
5. Position the console over the fuel tank without touching the adhesive to the tank surface. Center the large hole over the console alignment ring tool, and align the mark on the rear of the console with the mark made on the rear of the fuel tank.
6. Slide the front of the console down over the console alignment ring tool onto the fuel tank. Bring the rear of the console down, keeping the marks aligned.
7. Press the console firmly against the top of the fuel tank and hold pressure for 30 seconds. After releasing pressure, avoid direct contact with the console for about 20 minutes, then remove the console alignment ring tool.
8. Remove the small-diameter fuel filler cap and install the original fuel filler cap.
9. Refer to the Sportster Models Service Manual and follow the instructions given to install the seat.

**⚠ WARNING**

**After installing seat, pull upward on front of seat to be sure it is in locked position. While riding, a loose seat can shift causing loss of control, which could result in death or serious injury. (00070a)**

10. Allow AT LEAST 24 hours after applying the console before exposing the area to vigorous washing, strong water spray or extreme weather. The adhesive bond will increase to maximum strength after about 72 hours at normal room temperatures.

## Credit Procedure

For each vehicle requiring console replacement, complete a regular warranty claim referencing Service Bulletin M-1152 in the 'Comments' or 'Note' field of the claim. Fill in the rest of the claim as follows:

**Table 1. Warranty Claim Entries**

Claim Type	MC
<b>Event 1, Problem Part No., Qty., Description</b>	0-71276-04 Console assembly
<b>Event 1, Additional Part No., Qty., Description</b>	1-71276-04A Console assembly
<b>Customer Concern Code</b>	9203
<b>Condition Code</b>	1506
<b>Primary Labor Code</b>	2553
<b>Time Allowed</b>	0.5

Upon receipt and processing of the properly completed claim, you will be credited the appropriate amount for parts and labor. Be sure to destroy and properly dispose of all replaced fuel tank consoles 60 days after receiving credit on the claims.

**NOTE**

*This condition will be warranted while the vehicle is still under factory warranty only.*