

# SERVICE BULLETIN



M-1076      Noncompliance Recall Code 094      November 16, 1998

## 1999 883 Custom Certification Label

### General

Harley-Davidson has determined that certain 1999 XL 883 Custom motorcycles fail to conform to Federal Motor Vehicle Safety Standard (FMVSS) 120 section 5.3.

The certification label incorrectly indicates the front tire size as 100/90-19 57H instead of the correct designation, MH90-21 56H. In addition, the certification label does not contain the correct model designation (XL 883C).

### Dealer Action

All registered owners were sent the required label along with a notification letter and instructions on label placement. However, if the customer requests you to affix the label, the customer should provide the label that was sent with the notification letter. Install the label at no charge to the customer.

You are responsible for affixing the label to the frame right downtube of all vehicles in your inventory. The appropriate amount of labels for all vehicles in your inventory, as shown on the attached list, is included with this bulletin. Additional labels can be obtained if needed by calling Sarah Ottallah, at 1-414-343-4358.

### Instructions

In order to meet federal regulations, a label must be placed on the frame right front downtube of each affected motorcycle. Follow the instructions below.



**Carefully align label as shown in illustration. Once attached, the label cannot be removed without damage. DO NOT cover the Vehicle Identification Number (VIN).**

1. Refer to instructions included with this bulletin.
2. Clean frame surface at location shown in Figure 1.
3. Remove adhesive backing from new label. Install new label over existing label in the position shown in Figure 2.
4. Completely fill out the Dealer Service Card, sign and date it and return to Harley-Davidson.

### Credit Procedure

For each vehicle remedied, completely fill out a Dealer Service Card. Place a "C" in the letter box. If using the new bar-coded card supplied to the customer with the notification, affix your bar-coded dealer label, if available, in the appropriate box. Labels are included with this bulletin. If using the old style Dealer Service Card, be sure you supply all necessary information, including the VIN, your dealer number, and dealership name and address.

When Harley-Davidson receives your properly completed Dealer Service Card, you will be credited for 0.2 hour of labor for performing the procedures, which includes 0.1 for administration time.

| ROUTING      | SERVICE<br>MANAGER | SALES<br>MANAGER | PARTS<br>MANAGER | LEAD<br>TECHNICIAN | TECHNICIAN<br>NO. 1 | TECHNICIAN<br>NO. 2 | TECHNICIAN<br>NO. 3 | TECHNICIAN<br>NO. 4 | RETURN<br>THIS TO: |
|--------------|--------------------|------------------|------------------|--------------------|---------------------|---------------------|---------------------|---------------------|--------------------|
| INITIAL HERE |                    |                  |                  |                    |                     |                     |                     |                     |                    |

1998 Harley-Davidson® Inc.



# INSTRUCTIONS

-J01456

November 16, 1998

## 1999 XL 883 Custom - Certification label

### Installation

In order to meet federal regulations, a label must be placed on the frame right front downtube of each affected motorcycle. Follow the instructions below.

#### CAUTION

Carefully align label as shown in illustration. Once attached, the label cannot be removed without damage. **DO NOT cover the Vehicle Identification Number (VIN).**

1. Clean frame surface at location shown in Figure 1.
2. Remove adhesive backing from new label. Install new label over existing label in the position shown in Figure 2.
3. Completely fill out the Dealer Service Card, sign and date it and return to Harley-Davidson.

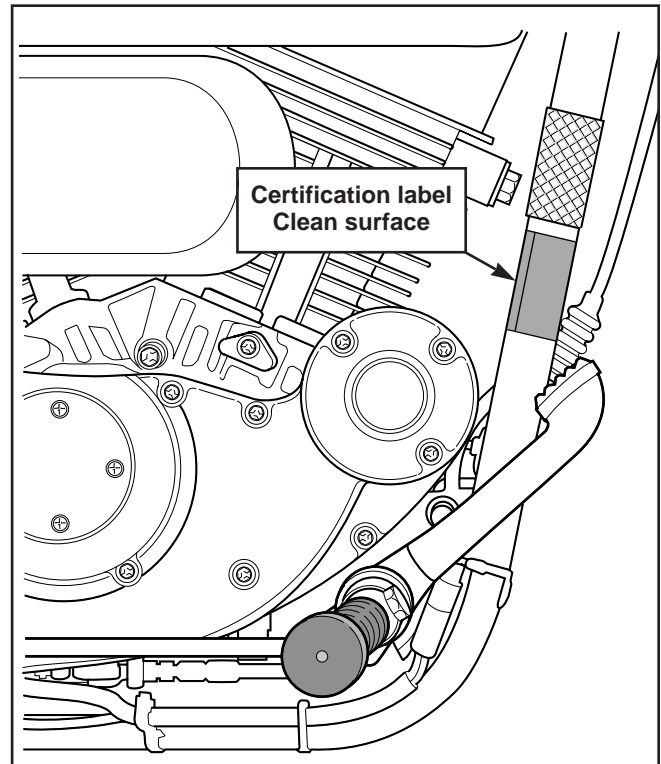


Figure 1

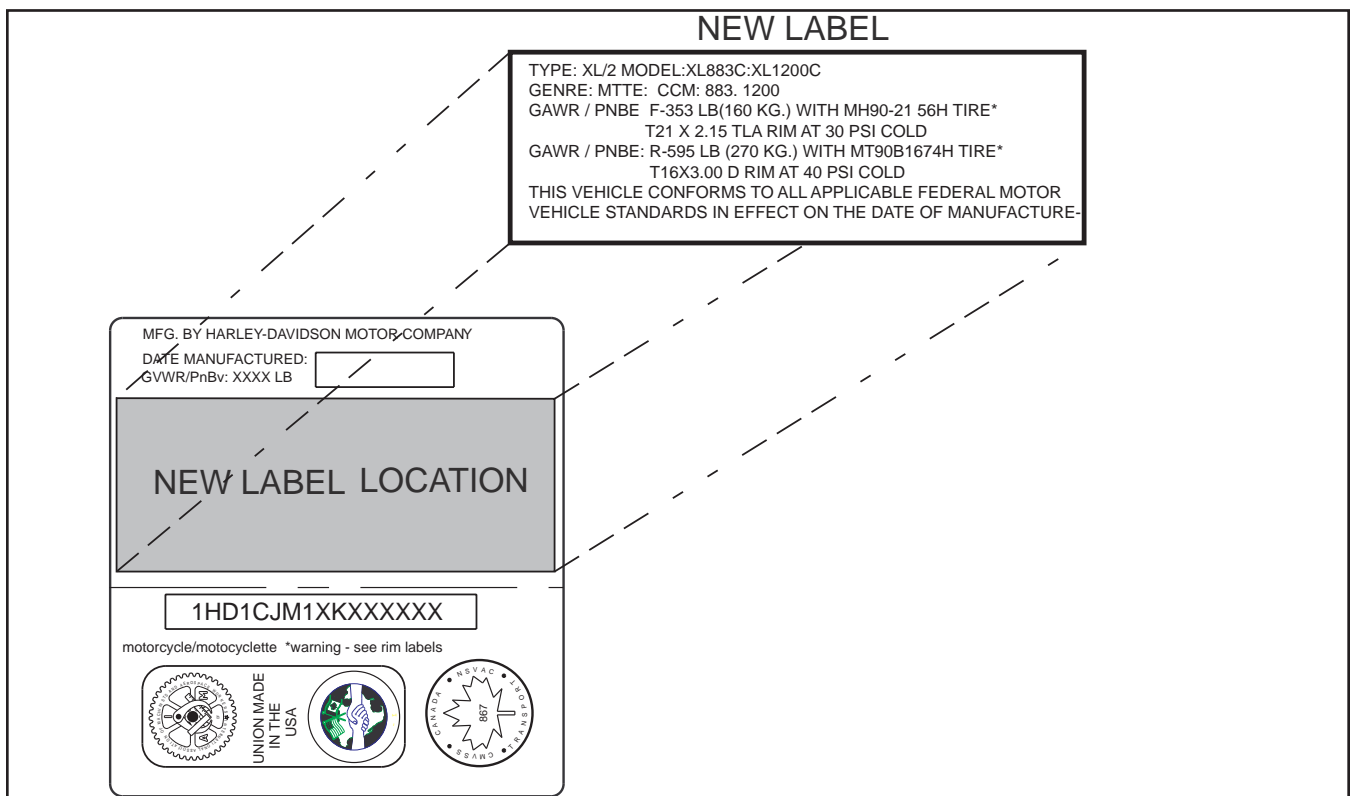


Figure 2