

# SERVICE BULLETIN

M-1064

January 24, 1997



## DYNA, SOFTAIL AND XLH SERVICE MANUAL UPDATE

The following errors appear in Chart 1 and Chart 3 of Turn Signal Troubleshooting as printed in some 1997 Service Manuals:

### NOTE

*See Tables at right for chart location.*

- Chart 1 of Turn Signal Troubleshooting has an incomplete box. The lower right hand box which reads "See Chart 2" should read "See Chart 2 of Speedometer Troubleshooting".
- Diagnostic Note 1 in Chart 1 of Turn Signal Troubleshooting should be deleted from the XL and Dyna Glide manuals (but remain in the Softail).
- On Chart 3 of Turn Signal Troubleshooting three boxes are missing.

The following pages show the correct troubleshooting charts. Changes are shown within the dashed lines. Please note these revisions in your manuals.

### Chart 1 Turn Signal Troubleshooting Location

Model	Manual Part No.	Page
XLH (Sportster)	99484-97	7-61
Softail	99482-97 99482-97A	8-41
Dyna Glide	99481-97	8-41

### Chart 3 Turn Signal Troubleshooting Location

Model	Manual Part No.	Page
XLH (Sportster)	99484-97	7-63
Softail	99482-97 99482-97A	8-43
Dyna Glide	99481-97	8-43

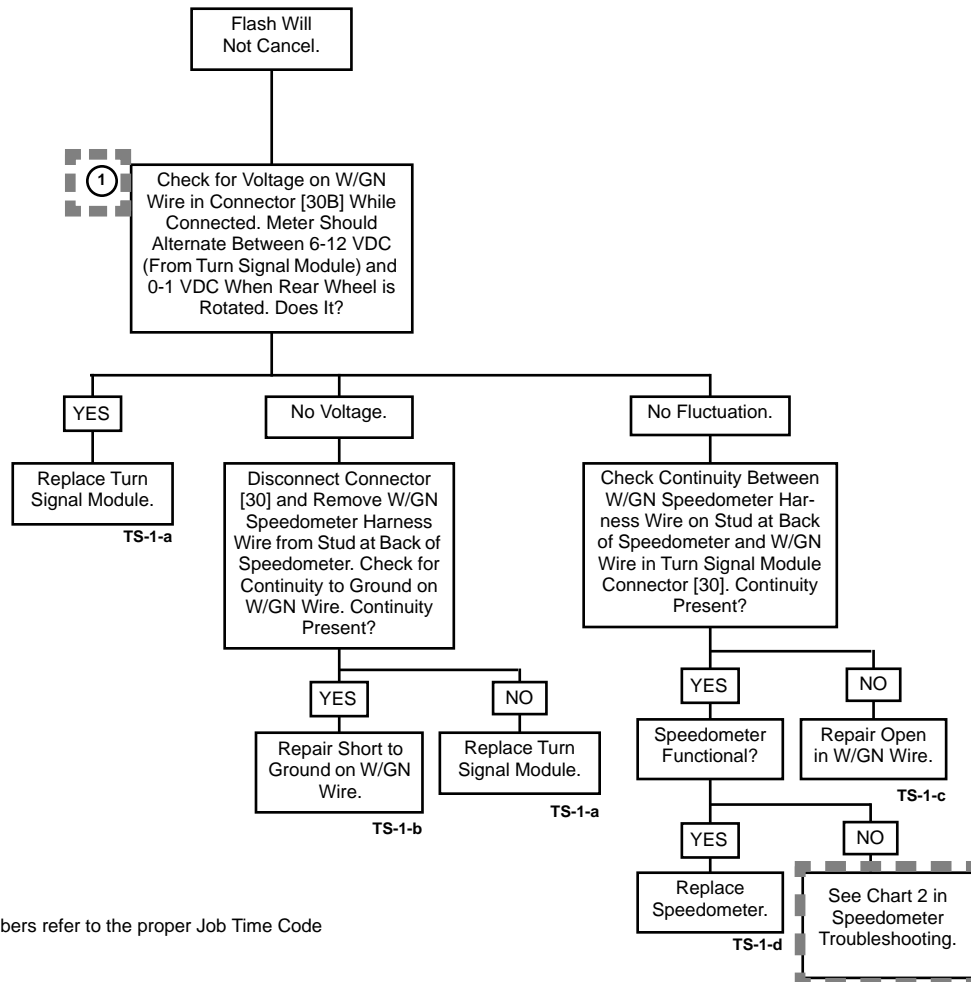
## Turn Signal Troubleshooting

### Chart 1: Turn Signals Will Not Cancel.

#### DIAGNOSTIC NOTES

The reference numbers below correlate with those on the diagnostic flow chart.

① **Softail Only:** Remove instrument panel. See Ignition Light Switch, Removal, Steps 1-3.



## Turn Signal Troubleshooting

**Chart 3: Turn Signals Will Not Flash, 4-Way Flashers Inoperable.**

