

SERVICE BULLETIN



M-1015

August 20, 1991

SAFETY RECALL 076 1992 MODELS FRONT AND REAR BRAKE PAD REPLACEMENT

General

Harley-Davidson has become aware the possibility exists for the friction pad to separate from the backing plate and dislodge from the front or rear caliper assembly. This condition could develop without prior warning and cause a reduction in stopping ability. Since the backing plate is not affected by the friction pad's dislodgement, it is still possible to restore some brake function in whichever brake caliper is affected with a few strokes of the brake control lever or pedal.

As a precautionary measure, Harley-Davidson recently elected to initiate a voluntary recall in the interest of motor vehicle safety. The potential problem will be remedied by replacing all front and rear brake friction pads on all 1992 models. This recall applies to all 1992 motorcycles, consisting of all model families, shipped from the beginning of the production year through August 8, 1991.

We have attached a list that contains both registered owners of vehicles and unregistered vehicles delivered to your dealership which are involved in this campaign. To ensure the safety of all affected riders, it is your responsibility to perform the required service on all potentially affected vehicles even if the motorcycle was not purchased from your dealership. We are enclosing sufficient blank Dealer Service Cards for these vehicles. Additional cards are available through the Harley-Davidson Service Department.

If you are not sure that a safety recall has been completed on a particular motorcycle, contact the Harley-Davidson Recall Information Line at 1-800-448-1708 for a computer check of our recall records.

WARNING

Because only registered owners, as shown on the attached list, will receive notification from us, we request that you contact any owners of vehicles still listed as unregistered. Advise them of the safety recall and make arrangements for them to come in for recall service. We also require that you provide us with their names and addresses and VIN's as soon as possible to enable us to mail them an owner's letter as required by the National Traffic and Motor Vehicle Safety Act as amended.

Shipment of your total requirement of brake pad kits should begin on August 21, 1991. If you need additional kits, fill out and return the attached order form. All kits ordered on this form will also be shipped no charge, transportation paid.

Recall Kit Part Numbers

See Table I for the recall kit Part No. and the model usage.

Table I. Brake Pad Recall Kits

Kit Part Numbers	Model Usage (1992 models)	Kit Contents
93639	FLHTC, FLHS, FLTC-ULTRA, FLHTC-ULTRA, FLHTP-Windshield & Fairing models	Four (4) front brake caliper brake pads, two (2) screws, Part No. 3562 and two (2) large, rear brake caliper brake pads
93640	XLH-883, XLH-1200, XLH-883 HUGGER, XLH-883 DELUXE, FXR, FXRS, FXLR, FLSTC, FLSTF, FXSTC & FXSTS	Two (2) front brake caliper brake pads, one (1) screw, Part No. 3562 and two (2) small, rear brake caliper brake pads
93641	FXDB-DAYTONA, FXRT, FXRS-SP, FXRS-CONV., FXRP Windshield & Fairing models	Four (4) front brake caliper brake pads, two (2) screws, Part No. 3562 and two (2) small, rear brake caliper brake pads

ROUTING	SERVICE MANAGER	SALES MANAGER	PARTS MANAGER	LEAD TECHNICIAN	TECHNICIAN NO. 1	TECHNICIAN NO. 2	TECHNICIAN NO. 3	TECHNICIAN NO. 4	RETURN THIS TO
INITIAL HERE									

NOTE

See Figure 1. The brake pads contained in the kits listed in Table I are identified (marked) as follows:

White paint dabs on front and rear edge of friction material.

In addition to the "Hayes 56 ----" the "CNC" impression stamped on metal backing plate indicates pad is the latest configuration.

Brake Pad Replacement Procedure

FRONT BRAKE CALIPERS (ALL MODELS EXCEPT FXSTS)

1. See Figure 2. Remove mounting fasteners (1, 2). Rock caliper by twisting the caliper outward and inward with your hands to force the piston into caliper to ease removal.
2. Lift caliper off of disc.
3. Remove screw (15) and inner pad (9).
4. Remove pad holder (7) and remove pad (9) from pad holder. Note position of spring clip (8) so it will be installed in the correct position.

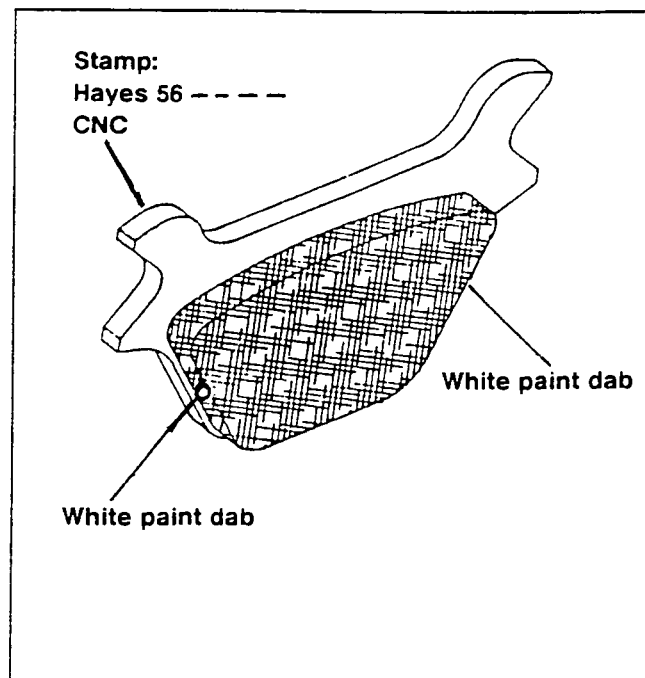


Figure 1. Brake Pad Marking

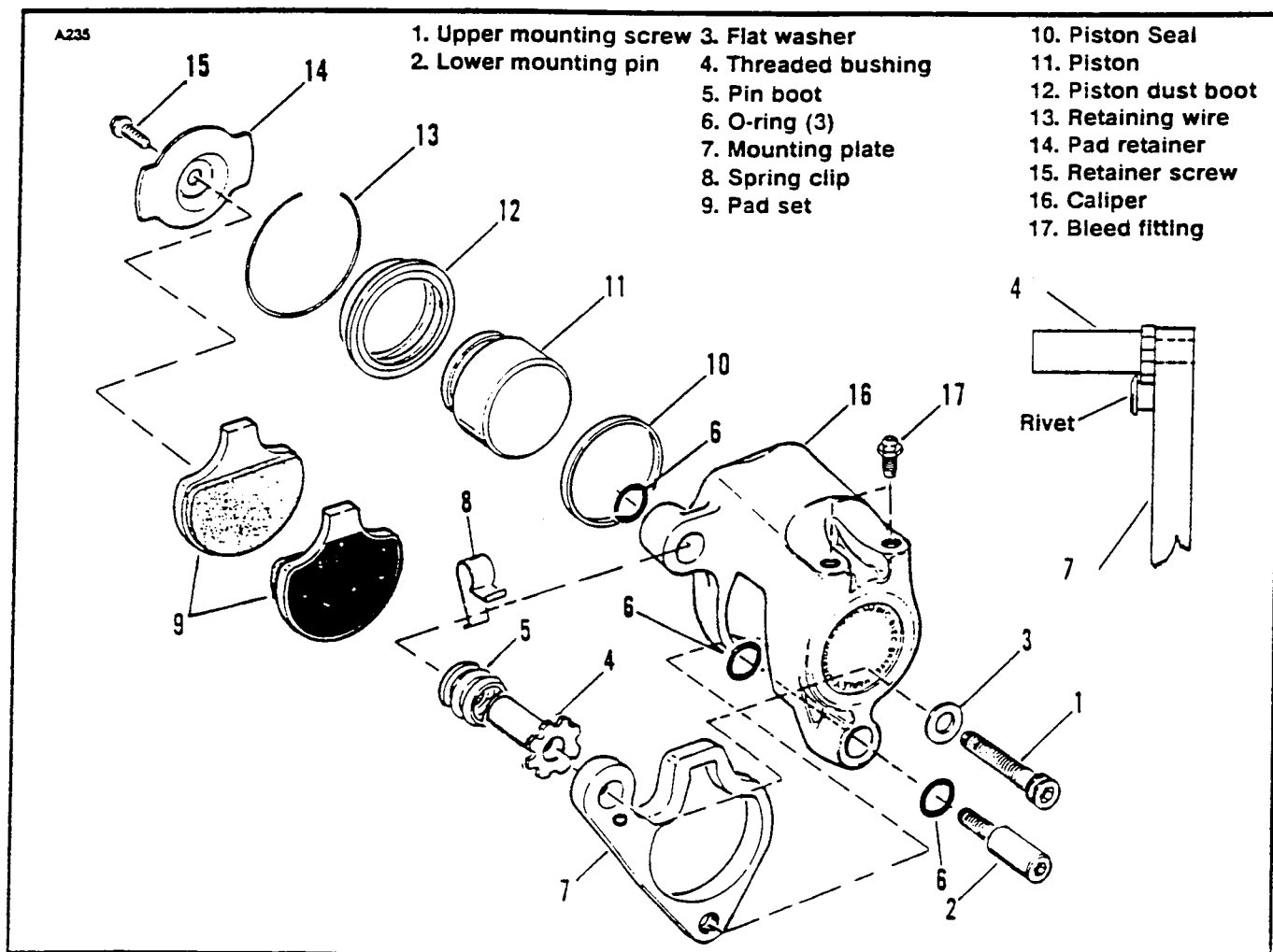


Figure 2. Front Brake Caliper

5. Install inner pad (has hole for screw 15) in caliper and fasten with pad retainer (14) and screw (15).
6. Tighten screw (15) to 40-50 in-lbs torque.
7. Install outer pad (9) and spring clip (8) in pad holder (7)
8. Insert assembly of outboard pad (9), pad holder (7), and spring clip (8) into place, with backside of the pad against face of piston.

NOTE

The spring clip loop and friction material must always face away from the piston. If it is facing the piston, remove the pad. Reverse the pad holder and reassemble the parts.

CAUTION

See Figure 2, Assembled View of (4) and (7). The head of the threaded bushing (4) must be assembled beneath the rivet head on the pad holder (7). In addition, one of the U-shaped notches on the outer edge of the bushing flange must engage the rivet body. If the bushing is not positioned properly, damage to the rivet will occur when the caliper mounting fasteners are tightened.

9. Position caliper so that disc is situated between friction pads, and lower mounting hole in caliper is aligned with lower mounting lug (on front fork).
10. See Figure 2. Insert lower mounting pin (2) through caliper and front fork lower mounting lug, and then thread pin into tapped hole at lower end of pad holder (7). Tighten pin to 25 - 30 ft-lbs torque.
11. Rotate caliper to align upper mounting holes in caliper and front fork.
12. Install upper mounting screw (1) with washer (3) through front fork upper mounting lug and pad holder (7), and then thread the screw into threaded bushing (4). Tighten screw to 25 - 30 ft-lbs torque.
13. Pump brake lever until pads contact brake disc.

FXSTS FRONT BRAKE CALIPER

1. See Figure 3. Remove cotter pin (1) and washer (2) from upper mounting bolt (3).
2. Remove upper (3) and lower (5) mounting bolts and washer (4).
3. Perform steps 1 through 8 of **FRONT BRAKE CALIPERS (ALL MODELS EXCEPT FXSTS)**.

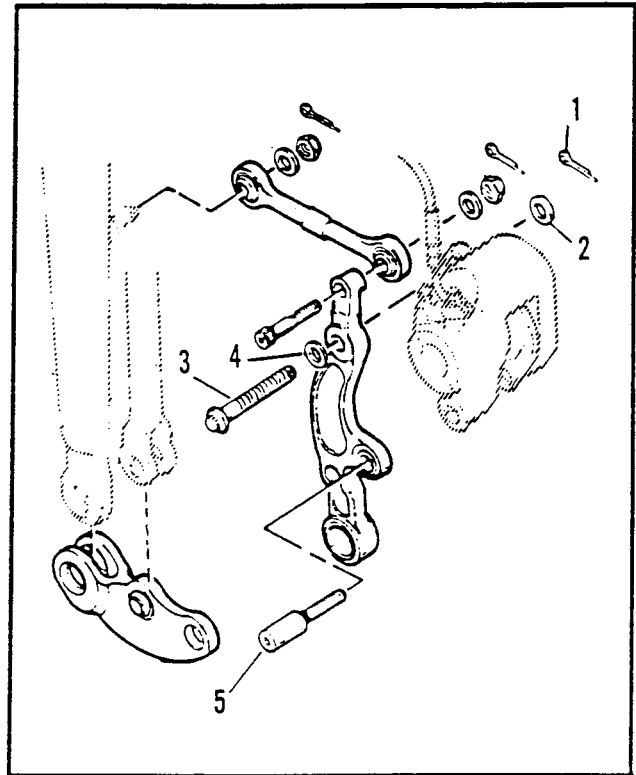


Figure 3. Brake Mounting FXSTS

4. Install caliper over disc, install upper mounting bolt (3), washer (4) and lower bolt (5).
5. Tighten upper mounting bolt to 42-46 ft-lbs torque and lower bolt to 25-35 ft-lbs torque.
6. Install washer (2) and cotter pin (1) on upper bolt (3).
7. Pump brake lever until pads contact brake disc.

REAR BRAKE CALIPERS (ALL MODELS)

NOTE

To remove and replace the rear brake caliper pads, follow the instructions given in the applicable 1991 Service Manuals and Service Bulletin M-1007. A rivet head on the pad insulator requires that the piston be retracted farther than with previous pads. To retract the piston, remove the caliper mounting fasteners, rock caliper by twisting the caliper outward and inward with your hands to force the piston into caliper. DO NOT REMOVE BRAKE LINE WHILE REPLACING PADS. REUSE ABUTMENT SHIMS INSTALLED ON THE CALIPER BRACKETS.

Credit Procedure

1. After servicing each vehicle be sure to completely fill out the special Dealer Service Card provided. For each vehicle serviced place a "C" in the Letter box and a "1" in the Qty box. Fill in your Dealer Account Number, the Service Code 076, the Vehicle Identification Number and your Dealership name and address along with the owner information if blank.
2. Package the original pads along with the properly completed Dealer Service Card.
3. Attach a return address P-label, Form Number 1248 to the outside of the package and send to Harley-Davidson.
4. Upon receipt of the replaced pads and the properly completed Dealer Service Card, you will be credited for return postage and labor as specified in Table II. Credit will not be issued for parts as they were shipped no charge transportation paid. These labor times include an additional 0.1 hr. for dealer administrative time.

Table II Brake Pad Recall Labor Credit

Model	Hour Per Caliper		Total Credit (Includes 0.1 hr. for admin. time)
	Front	Rear	
FLHTC, FLHS, FLTC-ULTRA, FLHTC-ULTRA FLHTP- Windshield & Fairing models	0.2 (0.1 per caliper)	0.5	0.8
XLH-883, XLH- 1200, XLH-883 HUGGER, XLH- 883 DELUXE	0.1	0.1	0.3
FXRS-SP, FXRS- CONV.	0.2 (0.1 per caliper)	0.1	0.4
FXR, FXRS, FXLR	0.1	0.1	0.3
FLSTC, FLSTF, FXSTC & FXSTS	0.1	0.2	0.4
FXDB-DAYTONA	0.2	0.1	0.4
FXRT, FXRP Windshield & Fairing models	0.2 (0.1 per caliper)	0.3	0.6

Credit Procedure For Brake Pad Kits In Dealer Stock

1. If you have any of the following kits in your stock, they must be returned to Harley-Davidson. Fill out a Warranty Claim Form referencing this Service Bulletin (M-1015) in the "Remarks" section. Return the claim along with the parts following normal warranty procedure. Upon receipt at Harley-Davidson, you will be credited for parts along with return postage.

Part No. 43957-86D, Rear pad kit for FLT models

Part No. 44063-83B, Front pad kit for all models

Part No. 44209-87B, Rear pad kit for all models,
except FLT models

2. If you have sold any of the above pad kits, contact the customer(s) and exchange the pad sets for new ones. For pads already installed in a vehicle, please contact the owner and make arrangements to have the recall service performed. Upon completion, complete a Warranty Claim Form using labor code 2419 and indicate Code 076 Service in the "Remarks" section of the Claim form. Return the claim and the replaced pads following normal warranty procedures. Upon receipt at Harley-Davidson, you will be credited for labor as indicated in Table II, along with return postage. The new pad kit number are as follows:

Part No. 43957-86E, Rear pad kit for FLT models

Part No. 44063-83C, Front pad kit for all models

Part No. 44209-87C, Rear pad kit for all models,
except FLT models

P & A SERVICE BULLETIN TO ALL DEALERS

P-20

November 18, 1991

BRAKE PAD AND ROTOR REPLACEMENTS

This Bulletin is being sent to advise all dealers of the recommended brake pad application when a new stainless steel brake rotor is installed on 1991 and earlier models.

See applications chart below.

For maximum service life, a new brake rotor should only be installed with the recommended replacement brake pads.

CAUTION

Using 1991 and earlier brake pads with 1992 stainless steel rotors will cause premature rotor wear.

Stock Original Equipment Rotors

Rotor	Application	Brake Pad Set
40909-92	FLH - Rear, 1981 to 1984	43957-80A
40939-92	FLT, FLHT - Rear, 1980 to 1985	43957-80A
41789-92	XL - Rear, 1979 to 1981 XL - Rear, 1982 to Early 1987 XL - Rear, Late 1987 to 1991 XR 1000 - Rear, 1983 to 1984 FXE - Rear, 1981 to 1983 FXE - Rear, 1984 to 1986 FLHS - Rear, 1981 to 1982 FLHS - Rear, 1983 to 1984 FXWG - Rear, 1983 to 1984 FXR - Rear, 1982 to Early 1987 FXR - Rear, Late 1987 to 1991 FXDB - Rear, 1991 FXST, FLST - Rear, 1984 to Early 1987 FXST, FLST - Rear, Late 1987 to 1991	43395-80A 44209-82A 44209-87C 44209-82A 44005-78A 44209-82A 44005-78A 44209-82A 44209-82A 43209-82A 44209-87C 44209-87C 44209-82A 44209-87C
41806-92	FXE - Rear, 1973 to Early 1978 FXE - Rear, Late 1978 FLH - Front, Rear, 1972 to Early 1978 FLH - Front, Rear, Late 1978	44135-74A 44005-78A 44135-74A 44005-78A
41813-92	FXE - Rear, Late 1978 to 1980 FLH - Rear, Late 1978 to 1980 FLH - Front, Late 1978 to 1984	44005-78A 44005-78A 44005-78A
44136-92	XL - Front, 1984 to 1991 XR 1000 - Front, 1983 to 1984 FXE - Front, 1984 to 1986 FXWG - Front, 1984 to 1986 FXR - Front, 1984 to 1991 FXST, FLST - Front, 1984 to 1991 FLT, FLHT - Front, 1984 to 1991	44063-83C 44063-83C 44063-83C 44063-83C 44063-83C 44063-83C 44063-83C

ROUTING	SERVICE MANAGER	SALES MANAGER	PARTS MANAGER	LEAD TECHNICIAN	TECHNICIAN NO. 1	TECHNICIAN NO. 2	TECHNICIAN NO. 3	TECHNICIAN NO. 4	RETURN THIS TO
INITIAL HERE									

1991 Harley-Davidson, Inc.

Stock Original Equipment Rotors

Rotor	Application	Brake Pad Set
44137-92	XL - Front, Late 1978 to 1983 FXE - Front, Late 1978 to 1983 FXR - Front, 1982 to 1983	44032-79A 44032-79A 44032-79A
44210-92	FLT, FLHT - Front, 1980 to 1983	43395-80A
Mechanical Accessory Rotors		
Rotor	Application	Brake Pad Set
44143-84A	XL - Front, 1984 to 1991 XR 1000 - Front, 1983 to 1984 FXE - Front, 1984 to 1986 FXR - Front, 1984 to 1991 FLT, FLHT - Front, 1984 to 1991	44063-83C 44063-83C 44063-83C 44063-83C 44063-83C
91845-85A	XL - Rear, 1979 to 1981 XL - Rear, 1982 to Early 1987 XL - Rear, Late 1987 to 1991 XR 1000 - Rear, 1983 to 1984 FXR - Rear, 1982 to Early 1987 FXR - Rear, Late 1987 to 1991	43395-80A 44209-82A 44209-87C 44209-82A 44209-82A 44209-87C