

SERVICE BULLETIN



M-1002

October 16, 1990

SAFETY RECALL CODE 072 1991 XLH RIGHT FOOTREST MOUNT

General

Harley-Davidson has become aware the possibility exists that the right side rider footrest mount could fracture if subjected to heavy impact loads. The fracture could result in reduced operator control. However, the rear brake system remains functional even without the right side footrest.

As a precautionary measure, Harley-Davidson recently elected to initiate a voluntary recall campaign in the interest of motor vehicle safety. The potential problem will be remedied by replacing the right side rider footrest mounting bracket on the potentially affected motorcycles.

This recall applies to all 1991 XLH model motorcycles, manufactured and shipped from our York, Pennsylvania Assembly Plant, from the beginning of the 1991 model year production, June 6, 1990, through September 27, 1990.

We have attached a list that contains both registered owners of vehicles and unregistered vehicles delivered to your dealership which are involved in this campaign. To ensure the safety of all affected riders, it is your responsibility to perform the required service on all potentially affected vehicles even if the motorcycle was not purchased from your dealership. We are enclosing sufficient blank Dealer Service Cards for those vehicles. If necessary, additional cards are available through the Harley-Davidson Service Department.

WARNING

Because only registered owners as shown on the attached list will receive notification from us, we request that you contact any owners of vehicles still listed as unregistered. Advise them of the safety recall and make arrangements for them to come in for recall service. We also require that you provide us with their names addresses and VIN's as soon as possible to enable us to mail them an owner's letter as required by the National Traffic and Motor Vehicle Safety Act as amended.

If you are not sure that a safety recall has been completed on a particular motorcycle contact the Harley-Davidson Recall Information Line at 1-800-448-1708 for a computer check of our recall records.

An initial shipment of Code 072 rider footrest mounting bracket kits (93629), consisting of 25% of your anticipated requirements will begin on October 23, 1990.

All Code 072 kits will be shipped no charge, transportation paid. Once you receive this automatic shipment, carefully calculate your remaining requirements and order them on the attached yellow order form. Code 072 kits ordered on this form will also be sent no charge, transportation paid.

Each (93629) kit contains the following parts:

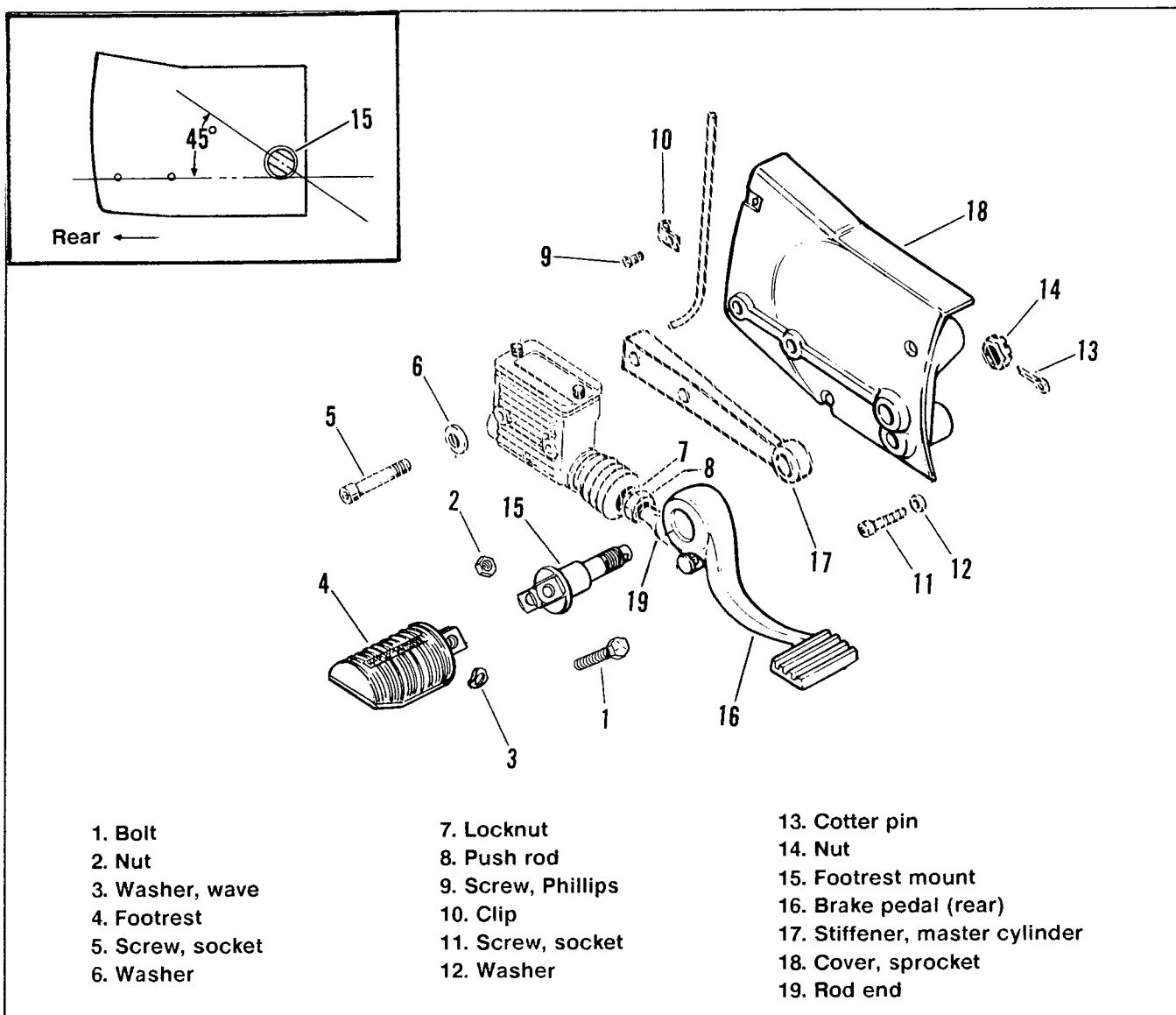
Qty	Part No.	Description
1	42441-90A	Footrest mount
1	7824	Nut
1	7778	Nut
1	534	Cotter pin
1	4724	screw
1	50912-72	Wave washer

Replacement Procedure

1. See Figure 1. Remove bolt (1), nut (2) wave washer (3) with footrest (4). Discard bolt, nut and wave washer.
2. Remove the two socket head screws (5) and washers (6) attaching master cylinder to sprocket cover (18).
3. At rear brake linkage, back-off on locknut (7) and turn push rod (8) at flats until rod end (19) is free of push rod.
4. See Figure 2. Loosen hose clamps at heat shields (3) and (4). Position shields to gain access to cylinder stud nuts (1).
5. With extension and flex socket, remove the cylinder stud nuts (1) and washers (2).
6. Remove locknut (5) attaching front muffler to sprocket cover stud.
7. Remove bolt (6) and nut (7) attaching rear muffler to muffler support (8).
8. Remove exhaust system with heat shields as an assembly.
9. See Figure 1. Remove Phillips screw (9) and clip (10) attaching brake line to sprocket cover.

ROUTING	SERVICE MANAGER	SALES MANAGER	PARTS MANAGER	LEAD TECHNICIAN	TECHNICIAN NO. 1	TECHNICIAN NO. 2	TECHNICIAN NO. 3	TECHNICIAN NO.4	RETURN THIS TO
INITIAL HERE									

10. Remove the three socket head screws (11) and washers (12) attaching sprocket cover (18) to case. Remove sprocket cover (18) with footrest mount (15).
11. At backside of sprocket cover, remove cotter pin (13) and nut (14) from footrest mount (15). Discard nut and cotter pin. Keep footrest mount for return.
12. Insert new footrest mount (15) from kit through brake pedal (16), master cylinder stiffener (17) and sprocket cover (18). Thread on new nut (14) from kit. Refer to inset Figure 1. Orientate footrest to rear of vehicle at 45° and torque nut (14) to 40-50 ft-lbs. Insert new cotter pin (13), from kit, through mount and bend ends.
13. Hold cover (18) with mount in place and install three mounting screws (11) with washers (12). Tighten screws (11) to 90-110 in-lbs torque.
14. Attach brake line to sprocket cover with clip (10) and Phillips screw (9).
15. See Figure 2. Place exhaust system in position with clamp rings (9) over studs in cylinder heads and front muffler tab over stud in sprocket cover.
16. Place washers (2) over cylinder studs and thread on nuts (1). Tighten nuts (1) to 60-80 in-lbs torque, using extension and flex socket.
17. Install nut (5) on sprocket cover stud and tighten to 50-60 ft-lbs torque.
18. Insert bolt (6) through rear muffler tab and hole in muffler support (9). Place lockwasher (7) on bolt (6) and thread on nut (8). Tighten nut (8) to 19 ft-lbs torque.
19. See Figure (1). Turn push rod (19) onto rod end (8) until foot pedal is nearly horizontal.
20. Place lockwashers (6) on master cylinder mounting screws (5). Insert screws through master cylinder, master cylinder stiffener (17) and thread into tapped holes in sprocket cover (18). Tighten mounting screws (5) to 155-190 in-lbs torque.
21. Adjust brake pedal to horizontal position and tighten locknut (7).



NOTE

Wave washer (3) is installed between footrest (4) and mount (15) at the inside of clevis forks.

22. Install footrest (4) with new wave washer (3), bolt (1) and nut (2). Tighten bolt (1) to 15 ft-lbs torque.

NOTE

After tightening bolt (1) move footrest up and down to be sure it moves freely. The footrest must move upward and downward with only slight resistance.

Credit Procedure

1. After servicing each vehicle be sure to completely fill

out the special Dealer Service Card provided. For each vehicle serviced place a "C" in the Letter box and a "1" in the Quantity box. Fill in your Dealer account Number, the Service code 072, the Vehicle Identification Number and your Dealership name and address along with the owner information if blank.

2. Package the original footrest mount along with the properly completed Dealer Service Card.
3. Attach a return address P-label, Form Number 1248 to the outside of the package.
4. Upon receipt of each replaced footrest mount and the properly completed Dealer Service Card, you will be credited for return postage along with 0.7 hours for each completion. The time allowance includes 0.1 hour for dealer administrative time. Credit will not be issued for parts as they were shipped no charge, transportation paid.

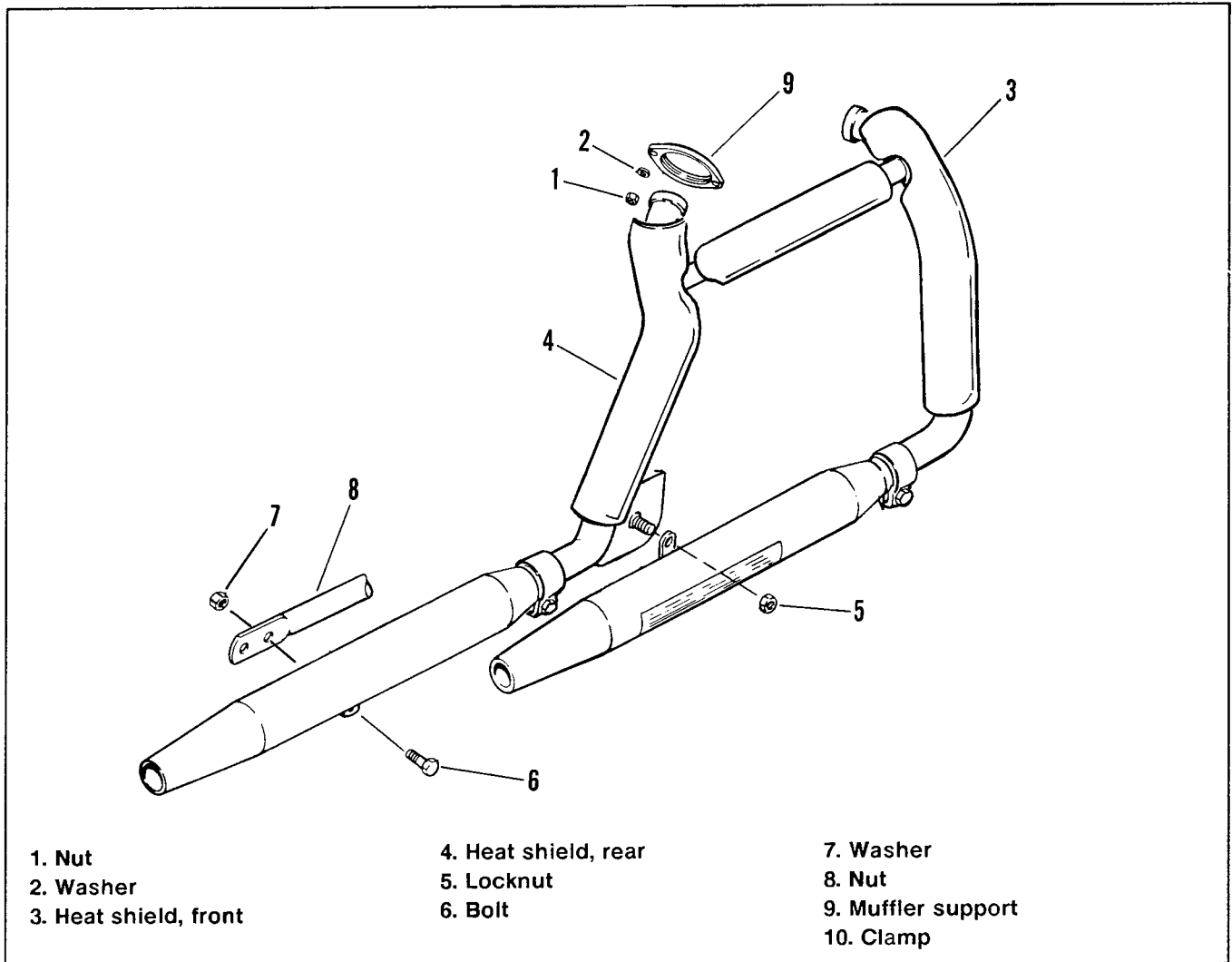


Figure 2. Exhaust System