

SERVICE BULLETIN

M-974

FEBRUARY 14, 1989



SAFETY RECALL CODE 065

1988/1989 RLE,TLE SIDECARS BRAKE SIDE PLATE

General

Harley-Davidson has become aware that the possibility exists that during the assembly of rear brake side plate assemblies used on 1988 and 1989 TLE and RLE sidecars, curved spring washers and/or flat washers may have been omitted from some of the side plate assemblies.

The absence of one or both washers theoretically could allow the eccentric to rotate, under certain circumstances, positioning the sidecar brake shoe in a full retracted position and therefore initially resulting in decreased rear braking performance. The motorcycle front brake, separately controlled by the right hand lever, would not be affected under any circumstances.

Although we have not received any reports of accidents from the field, Harley-Davidson elected to initiate a voluntary recall campaign to permit us to formally recall all potentially affected 1988 and 1989 TLE/RLE Sidecars, as a precautionary measure. These sidecars were shipped from our York and Tomahawk manufacturing facilities from March 1, 1988 through November 29, 1988. A list of all potentially affected vehicles is printed on the last page of this bulletin.

All registered owners of record are being notified by mail to contact you to arrange to have the service performed at no charge to them (see enclosed letter). Each registered owner letter will include a Dealer Service Card 065 which must be completed, dated and signed by both the customer and the dealer.

We have also attached a list that contains both registered owners and unregistered vehicles delivered to your dealership which are involved in this campaign. It is your responsibility to perform the required service on all potentially affected vehicles, including those which may not show up on your list. We are enclosing sufficient blank Dealer Service Cards for those vehicles. If necessary additional cards are available through the Harley-Davidson Service Department.

WARNING

Because only registered owners as shown on the attached list will receive notification from us, we request that you contact any owners of vehicles still listed as unregistered. Advise them of the safety recall and make arrangements for them to come in for service. We also require that you provide us with their names, addresses and VIN's as soon as possible to enable us to mail them an owner's letter as required by the National Traffic and Motor Vehicle Safety Act, as amended.

If you are not sure that a safety recall has been completed on a particular motorcycle, contact the Harley-Davidson Service Department for a computer check of our recall records.

A special pre-printed blue order form is attached to allow you to order your requirements of sidecar brake side plates Part No. 93608. All parts ordered on this form will be shipped to you freight prepaid no charge.

Sideplate Replacement Procedure

Removal

NOTE

Inspect all parts during disassembly and replace any damaged or worn parts that are beyond service limits as specified in Sidecar Service Manual.

1. Raise and block sidecar chassis so wheel may be removed.
2. See Figure 1. Loosen setscrew (1) in axle cap (2) .
3. Remove axle cap (2), rollpin (3) axle nut (4), and washer (5).
4. Remove locknut (6) bolt (7), nut (8) and lockwasher (9).
5. Cut cable straps attaching fender light wire and brake line to fender braces. Remove fender and wheel.

ROUTING	SERVICE MANAGER	SALES MANAGER	PARTS MANAGER	LEAD TECHNICIAN	TECHNICIAN NO. 1	TECHNICIAN NO. 2	TECHNICIAN NO. 3	TECHNICIAN NO.4	RETURN THIS TO
INITIAL HERE									

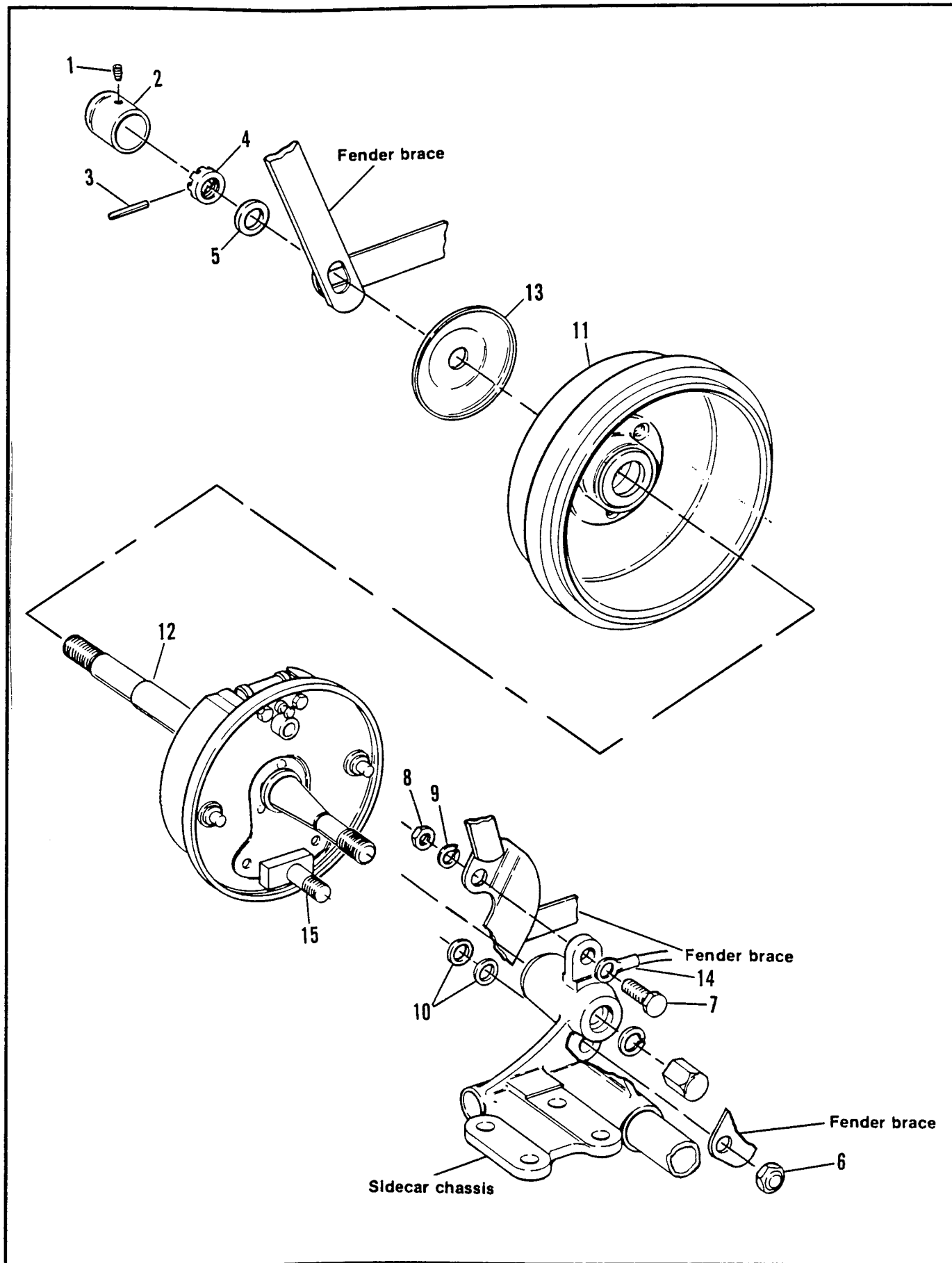


Figure 1. Wheel Assembly

NOTE

Do not depress rear brake pedal with brake drum removed because pistons in wheel cylinder will be pushed out.

Replacing Sideplate

1. See Figure 2. Remove hold-down springs (3) and springs (1) and (2). Remove shoes (8) and (9).
2. Apply a liberal coat of penetrating oil to the threads of brake line connection at back of side plate. Disconnect brake line tubing nut from flared fitting at wheel cylinder. Remove nut (4) securing the side plate to axle. Remove side plate assembly (5) and washers (10 Figure 1).

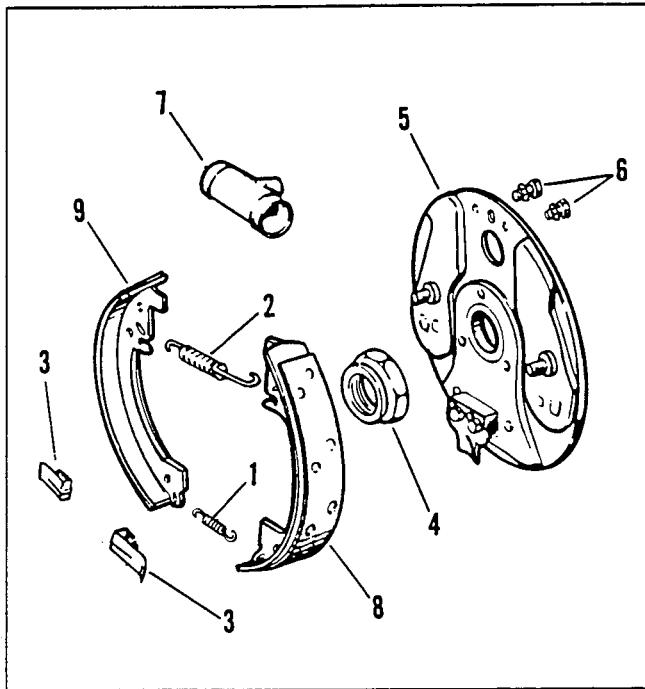


Figure 2. Side Plate Assembly

3. Remove the two screws and lockwashers (6) attaching brake cylinder assembly to side plate.
4. Take the brake cylinder removed from original side plate and attach to new replacement side plate with screws and washers (6). Tighten screws to 50-80 in lbs torque.
5. See Figure 1. Place washers (10) on anchor stud (15). See Figure 2. Install side plate assembly on axle and thread on nut (4). Tighten nut to 20-30 ft lbs torque. Thread tubing nut onto flared fitting at wheel cylinder. Tighten nut.

CAUTION

Be careful not to get grease on shoe or drum friction surfaces.

6. Apply a light coat of grease on hold-down springs (3). Grease area where shoes come in contact with side plate.
7. Insert hooks at ends of spring (1) into holes at lower ends of shoes (8 and 9). Position shoe assembly so that shoes straddle plate anchor block at bottom of side plate. Install top spring (2) with short hook inserted in elongated hole on front shoe. Install hold-down springs (3).

Installation

1. See Figure 1. Install wheel assembly (11) on axle (12).
2. Install hub cap (13), if equipped, on axle.
3. Install fender. The outer fender braces fit over the axle. Fasten inner fender support and ring terminal (14) of directional light ground wire to the chassis with fasteners (7,8 and 9). Tighten to 24 ft-lbs torque.
4. Secure inner fender brace with locknut (6). Tighten to 85 ft lbs torque.
5. Install castle nut (4) and tighten to 38 ft-lbs torque. Insert roll pin (3) and install cap (2).
6. Attach fender light and brake line to fender braces with cable straps

Adjustment

1. Elevate sidecar wheel just enough to allow free rotation.
2. The adjusting cams are located on the backside of brake drum. Turn the front brake shoe adjusting cam counter clockwise until brake lining surface contacts the drum with noticeable drag.
3. Turn wheel forward and backward several times to center the brake shoe. then turn cam clockwise to adjust shoe for very slight clearance.
4. Repeat Steps 2 and 3 for rear brake shoe except turn rear cam clockwise to produce lining drag then counterclockwise for very slight lining clearance.

Bleeding Brakes

1. Fill brake reservoir with brake fluid. Reservoir must be kept full during bleeding operation.
2. Attach one end of a clean length of hose (transparent preferred) to bleeder screw located on sidecar wheel side plate. Place other end of hose in clean glass jar.
3. Loosen bleeder screw slightly and slowly depress rear brake pedal. Tighten bleeder valve and release brake pedal. Continue this procedure until brake fluid, free of air, is expelled into jar. Check for leaks.
4. Repeat Steps 2 and 3 for motorcycle rear wheel.
5. Depress foot pedal several times to check brake operation.

Credit Procedure

1. After servicing each vehicle, be sure to completely fill out special Dealer Service Card provided. For each vehicle serviced, place a "C" in the letter box and a "1" in the Quantity box. Fill in your Dealer Account Number, the Service code 065, the Vehicle Identification Number (VIN of the sidecar) and your dealership name and address along with the owner information if blank.
2. Package the old side plate with the properly completed Dealer Service Card.
3. Attach a return address P-label. Form Number 1248 to the outside of the package.
4. Upon receipt of each replaced side plate and properly completed Dealer Service Card, you will be credited for postage along with 1.0 hour for each completion. The time allowance is the same for all models involved, and includes an additional 0.1 hour for dealer administrative time. Credit will not be issued for parts as they were shipped no charge transportation paid.

DOMESTIC VEHICLES INVOLVED IN 065 SAFETY RECALL

8SFX1XKT010047	8SFX19JT010247	8SGX13JT010086	8SGX18KT010005
8SFX1XKT010050	8SFX19JT010250	8SGX13JT010105	8SGX18KT010019
8SFX1XKT010078		8SGX13JT010119	8SGX18KT010021
8SFX1XKT010081		8SGX13JT010122	8SGX18KT010022
8SFX1XJT010084		8SGX13JT010136	8SGX18KT010036
8SFX1XJT010208	8SGX1XKT010006	8SGX13JT010153	8SGX18JT010066
8SFX1XJT010225	8SGX1XJT010006	8SGX14KT010003	8SGX18JT010083
8SFX10KT010056	8SGX1XKT010008	8SGX14KT010017	8SGX18JT010097
8SFX10KT010090	8SGX1XKT010023	8SGX14KT010020	8SGX18JT010102
8SFX10JT010198	8SGX1XKT010037	8SGX14KT010034	8SGX18JT010116
8SFX10JT010248	8SGX1XJT010070	8SGX14JT010078	8SGX18JT010133
8SFX11KT010034	8SGX1XJT010098	8SGX14JT010081	8SGX18JT010147
8SFX11KT010079	8SGX1XJT010103	8SGX14JT010095	8SGX18JT010150
8SFX11JT010209	8SGX1XJT010117	8SGX14JT010100	8SGX19KT010000
8SFX11JT010226	8SGX1XJT010120	8SGX14JT010128	8SGX19KT010014
8SFX11JT010243	8SGX1XJT010134	8SGX14JT010131	8SGX19KT010028
8SFX11JT010257	8SGX1XJT010148	8SGX14JT010145	8SGX19KT010031
8SFX11JT010260	8SGX1XJT010151	8SGX14JT010159	8SGX19JT010075
8SFX12KT010088	8SGX10KT010001	8SGX15KT010002	8SGX19JT010089
8SFX12JT010199	8SGX10JT010004	8SGX15KT010009	8SGX19JT010092
8SFX12JT010221	8SGX10KT010015	8SGX15KT010012	8SGX19JT010108
8SFX12JT010235	8SGX10KT010029	8SGX15KT010026	8SGX19JT010111
8SFX12JT010249	8SGX10KT010032	8SGX15KT010043	8SGX19JT010125
8SFX13KT010035	8SGX10JT010076	8SGX15JT010073	8SGX19JT010139
8SFX13KT010052	8SGX10JT010093	8SGX15JT010087	8SGX19JT010142
8SFX13KT010083	8SGX10JT010109	8SGX15JT010090	8SGX19JT010156
8SFX13JT010213	8SGX10JT010112	8SGX15JT010106	
8SFX13JT010227	8SGX10JT010126	8SGX15JT010137	
8SFX13JT010244	8SGX10JT010143	8SGX15JT010140	
8SFX13JT010258	8SGX10JT010157	8SGX15JT010154	8SHX10JT010004
8SFX13JT010261	8SGX10JT010160	8SGX16JT010003	8SHX11KT010000
8SFX14JT010169	8SGX11KT010007	8SGX16KT010018	8SHX12JT010005
8SFX14JT010205	8SGX11KT010010	8SGX16KT010021	8SHX13KT010001
8SFX14JT010222	8SGX11KT010041	8SGX16KT010035	8SHX17JT010002
8SFX14JT010236	8SGX11JT010071	8SGX16JT010079	8SHX19JT010003
8SFX15KT010053	8SGX11JT010085	8SGX16JT010082	
8SFX15JT010200	8SGX11JT010099	8SGX16JT010096	
8SFX15JT010214	8SGX11JT010104	8SGX16JT010101	
8SFX15JT010231	8SGX11JT010118	8SGX16JT010115	8SJX1XKT010004
8SFX15JT010245	8SGX11JT010121	8SGX16JT010129	8SJX11KT010005
8SFX15JT010259	8SGX11JT010135	8SGX16JT010132	8SJX13KT010006
8SFX15JT010262	8SGX11JT010149	8SGX16JT010146	8SJX17KT010025
8SFX16KT010028	8SGX11JT010152	8SGX17KT010013	8SJX17KT010039
8SFX16KT010076	8SGX12KT010002	8SGX17KT010027	
8SFX16JT010206	8SGX12KT010016	8SGX17KT010030	
8SFX17KT010040	8SGX12KT010033	8SGX17KT010044	
8SFX17KT010054	8SGX12JT010077	8SGX17JT010074	
8SFX17JT010196	8SGX12JT010080	8SGX17JT010088	
8SFX17JT010215	8SGX12JT010094	8SGX17JT010091	
8SFX17JT010232	8SGX12JT010127	8SGX17JT010107	
8SFX17JT010246	8SGX12JT010130	8SGX17JT010110	
8SFX18KT010077	8SGX12JT010144	8SGX17JT010123	
8SFX18JT010207	8SGX12JT010158	8SGX17JT010124	
8SFX18JT010241	8SGX13KT010011	8SGX17JT010138	
8SFX19JT010197	8SGX13KT010025	8SGX17JT010141	
8SFX19JT010202	8SGX13JT010072	8SGX17JT010155	