

Table of Contents

| | |
|---|----------|
| REF: Electrical System | 1 |
| Lights - Headlights - Bulbs, Mods, Relocating | 1 |
| Relocating the stock headlight to the lower tree. | 1 |
| Headlight OFF When Starting | 2 |

[Go To Technical Menu](#)

REF: Electrical System

Lights - Headlights - Bulbs, Mods, Relocating

Relocating the stock headlight to the lower tree.

The stock headlight is flipped upside down and bolted to the lower tree from the bottom using the existing housing mounting notch.

A new hole was drilled in the (now) back for the wires to exit. ¹⁾

The front wheel was removed to drill a 1/4" hole in the lower tree.



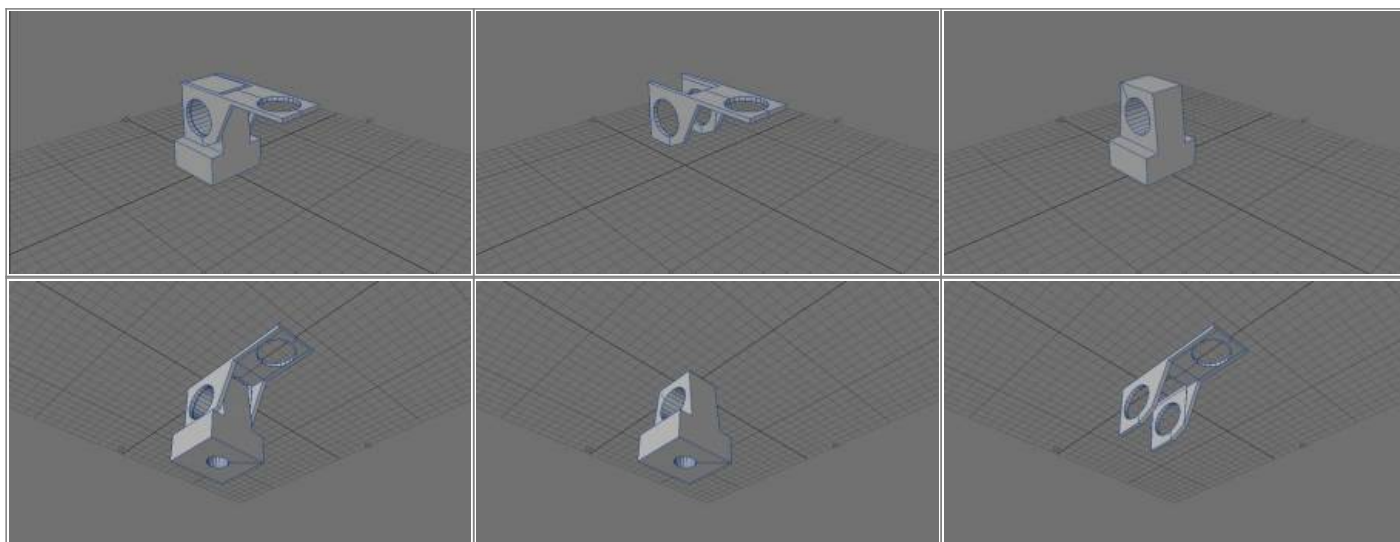
The bottom of the mount was tapped for a 1/4" bolt to run through the tree.

The bolt going through both mount halves is 1/2".

The spacer between the mount and the tree is made from scrap material. ²⁾



The 2 piece mounts were welded together with a mig welder using flux core wire. Here are some drawings of the mounting bracket (dimensions not to scale). ³⁾



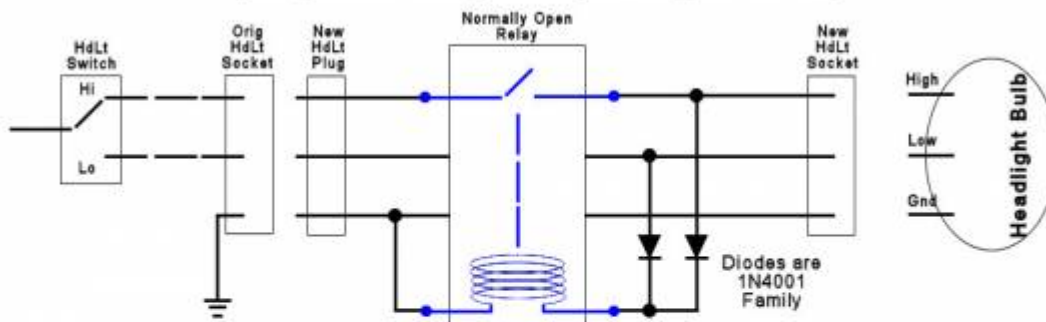
Headlight OFF When Starting

Here's a scheme for keeping the headlight off while you start your bike. You must have the headlight switch on HiBeam when you turn the keyswitch ON. Then you start the bike. Once started, you turn your headlight switch to LoBeam & the lights will not operate as normal, until you turn off the keyswitch.

The circuit uses commonly available parts - Relay, diodes & headlight extension harness. The circuit keeps power off the relay (contacts to the HiBeam open) until you switch to LoBeam. The only concern is that the relay operates all the time when the headlights are ON.

Headlight OFF When Starting with HdLt Switch Hi Then switch from Hi to Lo to Activate Headlight

(Relay will be energized any time lights are ON)



Set Headlight Hi/Lo switch Hi - Then Key switch to ON
Start Bike - Relay open contacts keep headlight OFF
After starting, set headlight switch to Lo
Relay will be latched ON and headlight will
operate as normal in either Lo or Hi position
until key switch is turned OFF
If key switch turned ON with headlight switch in Lo
relay will latch & lights will be on as normal

Relay is typical automotive 4 contact version or other similar
Diodes are common 1N4001 or others from 1N4000 Family
Use Headlight cable extender or cut/solder in original wiring

(Basic Idea From: www.advrider.com/f/threads/headlight-switching-idea.506789)



4)

Go To Technical Menu

1) 2) 3)

photos by vwclogan of the XLFORUM

<https://www.xlforum.net/forum/sportster-motorcycle-forum/sportster-motorcycle-general-discussion-and-problems/112669-stock-headlight-mod-relocation/page2?t=1067978&page=2>

4)

Thanks to Bluto for the link in this XLF

thread: <https://www.xlforum.net/forum/sportster-motorcycle-forum/sportster-motorcycle-electrical/sportster-motorcycle-lighting/203773-headlight-off-switch?t=2081063>

From:

<http://www.sportsterpedia.com/> - **Sportsterpedia**

Permanent link:

<http://www.sportsterpedia.com/doku.php/techtalk:ref:elec04>

Last update: **2024/01/12 00:26**

